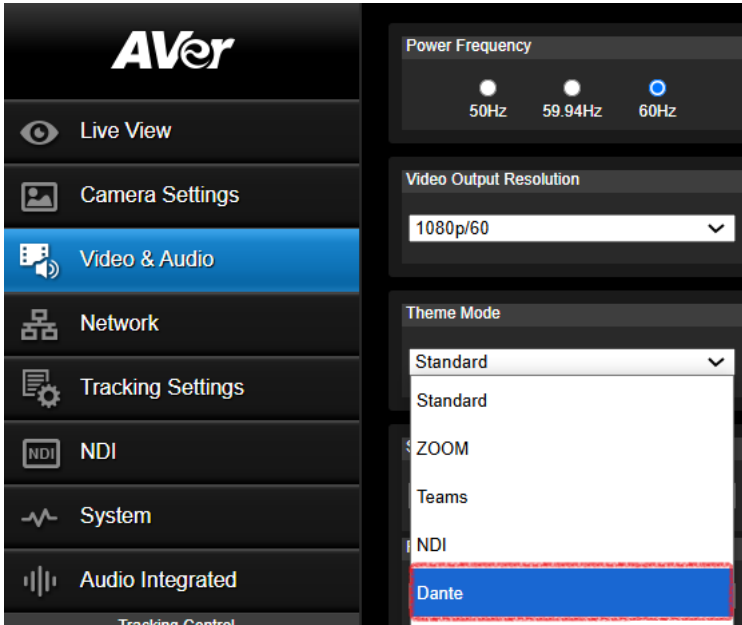
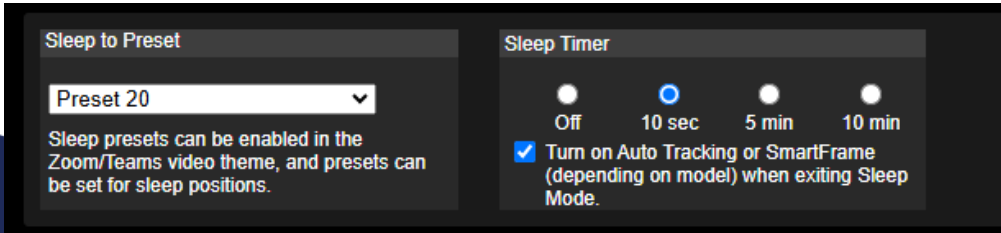


Release note

Product:

PTZ Camera: PTZ211/PTZ231/PTZ310UV2/PTZ310UNV2/PTZ330UV2/PTZ330UNV2

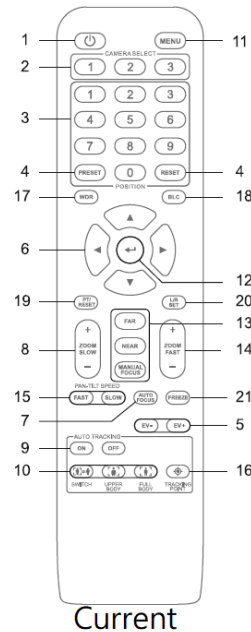
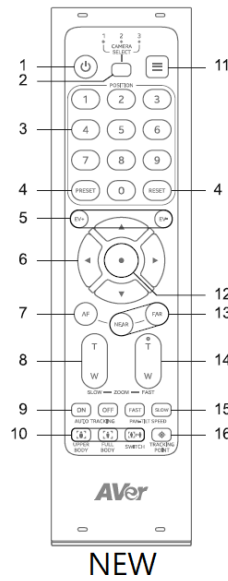
Tracking Camera: TR211/TR315/TR315N/TR335/TR335N

FW version	V0.0.0000.50
Release date	2025/02/14
New Feature	<p>1. Dante Ready SDK Preloaded</p> <p>The Dante Ready SDK is now preloaded into the camera, allowing users to enable Dante AV-H through Dante software. For more details, see the Dante Ready introduction.</p> <p>Once Dante AV-H is activated, it can be enabled from the web interface, with the theme mode switching as shown below.</p>  <p>2. Auto Tracking can now be automatically enabled when connected to a USB video output, without the need for remote control. This user-friendly configuration ensures that Auto Tracking activates alongside USB video output and disables when USB video is disconnected, with the camera returning to a sleep preset to maintain user privacy.</p> <p>This feature is supported in two video modes: Teams and Zoom.</p> 

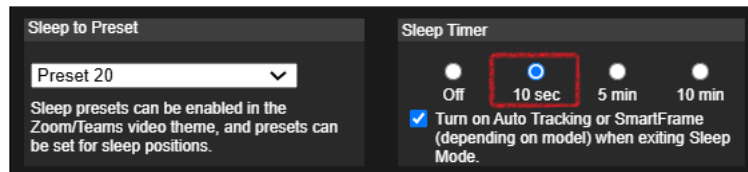
<p>Improvement</p>	<ol style="list-style-type: none"> 1. Improved VISCA Auto Focus Command: The focus command now functions as a press-hold-release action. When pressing the Focus Far/Near button, the camera continues focusing (hold) until the button is released. 2. Added "P/T Reset" and "Panning Direction (L/R Set)" to the Web Interface and OSD Manual to prepare for the new remote control rollout in Q2, we have added the "P/T Reset" and "Panning Direction (L/R Set)" options to the web interface and OSD manual. The new remote control features a simpler design, removing two buttons and relocating their functions to the web interface and OSD manual. Both the current and new remote controls will be fully compatible with the camera. Please see the new remote control design below. <div style="text-align: center;"> </div> <div style="text-align: center;"> </div>

Remote Control

Your device may come with one of the following remote controls.



3. Bug Fix: Resolved an issue where the live image would freeze when switching to Portrait mode while connected to an HDMI output.
4. Bug Fix: Resolved a 2-second timer delay issue, where the actual delay was 12 seconds instead of the configured 10 seconds when disconnecting a Zoom Room meeting.



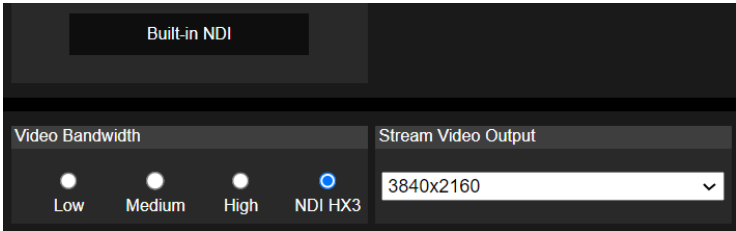
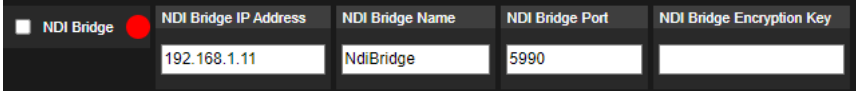
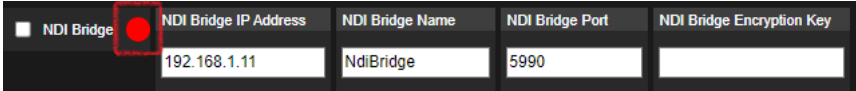
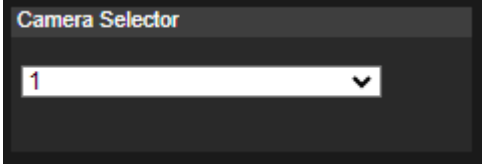
Known issue

1. We recommend using the Chrome browser for configuring webpages.
2. When using NDI video theme mode, the USB video stream will be temporarily paused in order to ensure the best possible NDI HX3 video streaming experience.

*Simultaneous outputs in different video theme modes:

Video modes	PTZ310UNV2/PTZ330UNV2 TR315N/TR335N	PTZ310UV2/PTZ330UV2 PTZ211/PTZ231/TR315/TR335
Standard/Teams/Zoom	HDMI/IP/NDI HX2/USB (4KP60) 3G-SDI (1080P60)	HDMI/IP/USB(4KP60) & 3G-SDI (1080P60)
NDI	HDMI/IP/NDI HX3 (4KP60) & 3G-SDI (1080P60)	NA

- | | |
|--|---|
| | <ol style="list-style-type: none">3. HTTPS: Enable HTTPS to establish a secure connection between the browser and the camera. To enable HTTPS, please follow the steps below.<ol style="list-style-type: none">A. Obtain an SSL certificate in base-64 encoding format for encryption and decryption, and a private key in PKCS#8 format (must be unencrypted).B. Convert the required certificate content into PEM format. The SSL certificate uploaded to the camera must be in PEM format.C. In the HTTPS settings field, select "On", then click "Choose File" to select the certificate file, and then click "Upload". |
|--|---|

FW version	V0.0.0000.47								
Release date	2024/11/22								
New Feature	<p>3. Able to enable the NDI HX3 through FW upgrade and without any activation process. *Remark1: If your camera has previously activated NDI HX2 using a license key, this firmware upgrade will enable NDI HX3 directly. *Remark2: Deactivation requires downgrading the firmware.</p>  <p>4. Added NDI6 Bridge function</p>  <p>5. Added NDI status indicator for NDI streaming: red indicates disconnected, green indicates connected.</p>  <p>6. Added ONVIF command support for the BOSCH CCS1000 D Digital Discussion System. https://www.boschsecurity.com/xc/en/solutions/conference-solutions/plugin-and-play-digital-discussion/</p> <p>7. Added a Camera Selector on the webpage (located on the System page).</p>  <p>8. Remote control (Hotkey) supports the following functions:</p> <table border="1"> <thead> <tr> <th>Button</th> <th>Function name</th> <th>How to use</th> <th>Functions description</th> </tr> </thead> <tbody> <tr> <td>6</td> <td>Factory default</td> <td>Press 6 times (666666)</td> <td>Restore factory default settings</td> </tr> </tbody> </table>	Button	Function name	How to use	Functions description	6	Factory default	Press 6 times (666666)	Restore factory default settings
Button	Function name	How to use	Functions description						
6	Factory default	Press 6 times (666666)	Restore factory default settings						

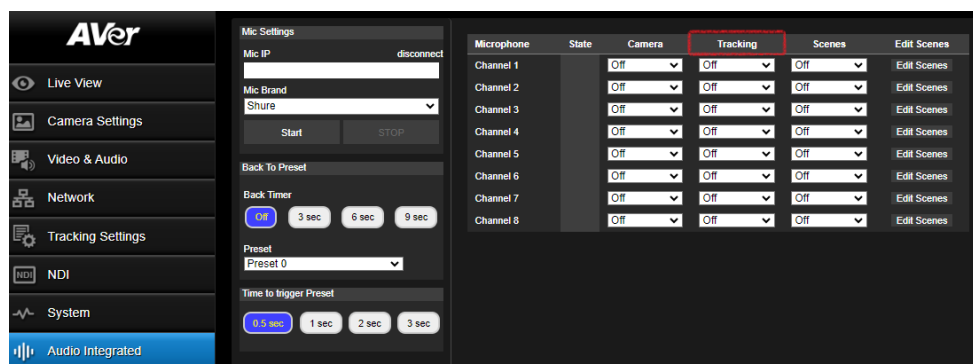
7	AI frame*	Press 7 times (7777777)	Shown Human AI frame on HDMI output
8	Set Static IP	Press 8 times (88888888)	Set the IP address to static IP (192.168.1.168)
9	Account Default	Press 9 times (999999999)	Restore account settings to default

*When AI frame is enabled, both image quality and AI performance may be affected. It is recommended to enable this feature only for troubleshooting purposes.

9. Able to do digital zoom of 1080p resolution.

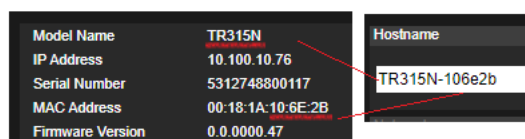
Improvement

5. Correct the name of the Audio integrated function:



6. Redefine the hostname logic to use the model's name combined with the last 6 digits of the MAC address.

Note: When upgrading an existing TR535 camera to FW V47, the hostname will remain unchanged. However, once the "Default" option is executed on the OSD, the hostname will update to the model's name combined with the last 6 digits of the MAC address.



7. **Stream Video Output:** Change the default Bitrate setting from 4Mbps to "Auto" to improve video quality.

Note1: When upgrading an existing camera to FW V47, the Bitrate setting will remain unchanged. However, once the "Default" option is executed on the OSD, the Bitrate will be updated to "Auto."

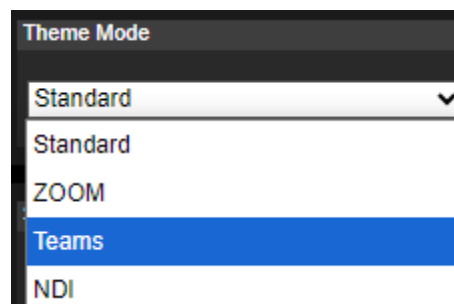
Note2: The default "Auto" Bitrate will be configured according to different resolutions as shown in the following table.

Resolution	Non-NDI Theme mode			NDI Theme mode		
	60FPS	30FPS	<30FPS	60FPS	30FPS	<30FPS
2160p	H265:32M	H265:16M	H265:8M	H265:56M	H265:56M	H265:56M
	H264:64M	H264:32M	H264:8M	H264:56M	H264:56M	H264:56M
1080p	H265:16M	H265:8M	H265:4M	H265:40M	H265:40M	H265:40M
	H264:16M	H264:8M	H264:4M	H264:40M	H264:40M	H264:40M
720p	H265:8M	H265:4M	H265:2M	H265:24M	H265:24M	H265:24M
	H264:8M	H264:4M	H264:2M	H264:24M	H264:24M	H264:24M
540p	H265:8M	H265:4M	H265:2M	H265:20M	H265:20M	H265:20M
	H264:8M	H264:4M	H264:2M	H264:20M	H264:20M	H264:20M
480p	H265:4M	H265:2M	H265:1M	H265:12M	H265:12M	H265:12M
	H264:4M	H264:2M	H264:1M	H264:12M	H264:12M	H264:12M
360p	H265:2M	H265:1M	H265:512K	H265:12M	H265:12M	H265:12M
	H264:2M	H264:1M	H264:512K	H264:12M	H264:12M	H264:12M

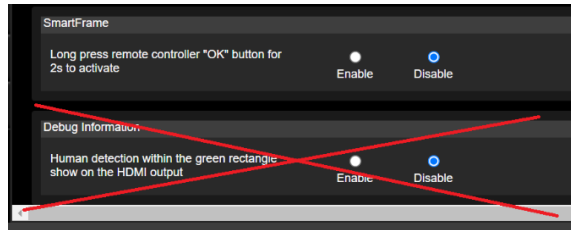
8. Optimized the network logic: The default setting is DHCP. If the camera fails to obtain an IP address within 30 seconds, it will switch to a static IP. Once a DHCP server is detected, the camera will automatically revert to DHCP mode.

9. Optimized the Teams mode logic:

1. Disable AV output (IP, HDMI, and SDI) when Teams mode is enabled.
2. Disable video preview in the WebUI when Teams mode is enabled.
3. Disable the UAC driver when Teams mode is enabled.
4. When the camera is not in use, it will automatically face downward for privacy.
5. When USB video is connected and the Tally lamp is on, the Tally lamp will turn off when the USB video is disconnected.



10. Removed “Debug Information” from the webpage for models PTZ211, PTZ231, PTZ310U(N)V2, and PTZ330U(N)V2.



11. Bug fix: Resolved image flickering issue during Teams meetings.

Known issue

4. We recommend using the Chrome browser for configuring webpages.
5. When using NDI video theme mode, the USB video stream will be temporarily paused in order to ensure the best possible NDI HX3 video streaming experience.

*Simultaneous outputs in different video theme modes:

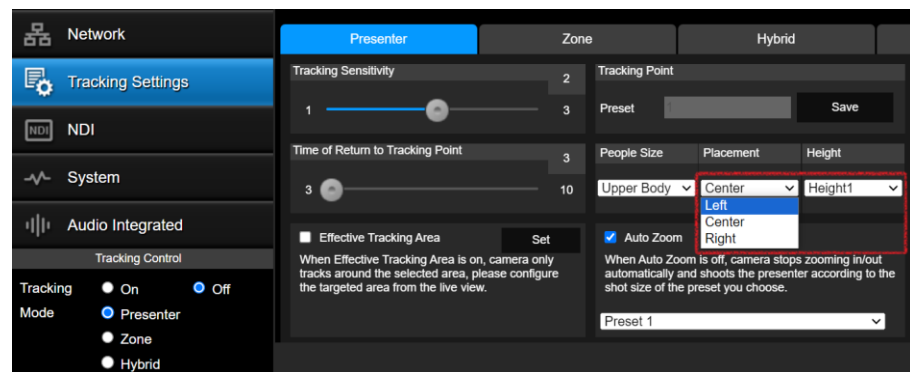
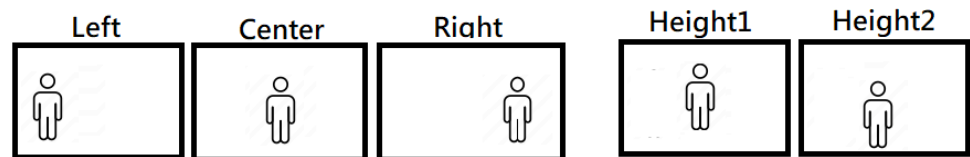
Video modes	PTZ310UNV2/PTZ330UNV2 TR315N/TR335N	PTZ310UV2/PTZ330UV2 PTZ211/PTZ231/TR315/TR335
Standard/Teams/Zoom	HDMI/IP/NDI HX2/USB (4K60) & 3G-SDI (1080P60)	HDMI/IP/USB(4K60) & 3G-SDI (1080P60)
NDI	HDMI/IP/NDI HX3 (4K60) & 3G-SDI (1080P60)	NA

6. HTTPS: Enable HTTPS to establish a secure connection between the browser and the camera. To enable HTTPS, please follow the steps below.
- D. Obtain an SSL certificate in base-64 encoding format for encryption and decryption, and a private key in PKCS#8 format (must be unencrypted).
- E. Convert the required certificate content into PEM format. The SSL certificate uploaded to the camera must be in PEM format.
- F. In the HTTPS settings field, select "On", then click "Choose File" to select the certificate file, and then click "Upload".

FW version	V0.0.0000.37
-------------------	---------------------

Release date	2024/5/24
---------------------	-----------

New Feature	<p>10. Able to set presenter position and height level on screen of Presenter mode and Hybrid mode.</p> <p>Note: This feature is only supported on TR211, TR315, TR315N, and TR335N.</p>
--------------------	--

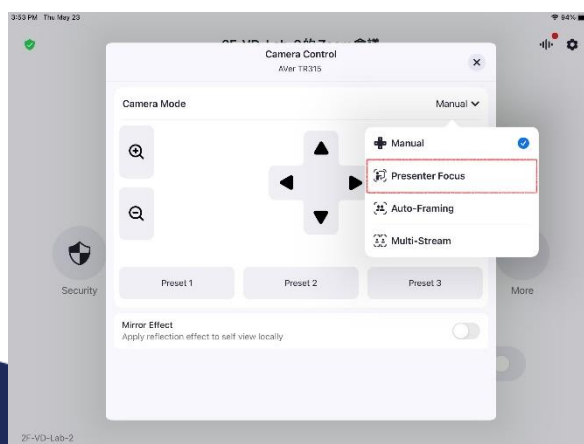


11. Supports Zoom Room's new feature "Presenter Focus." When "Presenter Focus" is enabled, the camera will start auto-tracking; when it is disabled, the camera will stop auto-tracking.

Note 1: This feature is only supported on TR211, TR315, TR315N, and TR335N.

Note 2: Zoom certification is still in process. This information is not yet listed on the Zoom Rooms Certified Hardware page. The announcement will be made by June. (It is recommended to start using Presenter Focus by June.)

Note 3: Zoom Rooms support starts with version 6.0.10



<p>Improvement</p>	<p>12. Optimized Camera Setup Webpage Log-In Password Rules:</p> <ol style="list-style-type: none"> 1. Password Length: Passwords must be between 8 to 32 characters long. 2. Mixed Characters: Passwords should include a mix of numbers and English letters. 3. Password and Account Name: The password must not be the same as the account name. 4. Supported Characters: <ul style="list-style-type: none"> ◆ Numeric characters: 0123456789 ◆ Alphabetic characters: ABCDEFGHIJKLMNOPQRSTUVWXYZabcdefghijklmnopqrstuvwxyz ◆ Symbols: %+=, - _ ^ / @ . ~ 									
<p>Known issue</p>	<p>7. We recommend using the Chrome browser for configuring webpages.</p> <p>8. When using NDI video theme mode, the USB video stream will be temporarily paused in order to ensure the best possible NDI HX3 video streaming experience.</p> <p>*Simultaneous outputs in different video theme modes:</p> <table border="1" data-bbox="434 1055 1399 1447"> <tr> <td>Video modes</td> <td>PTZ310UNV2/PTZ330UNV2 TR315N/TR335N</td> <td>PTZ310UV2/PTZ330UV2 PTZ211/PTZ231/TR315/TR335</td> </tr> <tr> <td>Standard/Teams/Zoom</td> <td>HDMI/IP/NDI HX2/USB (4KP60) 3G-SDI (1080P60)</td> <td>HDMI/IP/USB(4KP60) & 3G-SDI (1080P60)</td> </tr> <tr> <td>NDI</td> <td>HDMI/IP/NDI HX3 (4KP60) & 3G-SDI (1080P60)</td> <td>NA</td> </tr> </table> <p>9. HTTPS: Enable HTTPS to establish a secure connection between the browser and the camera. To enable HTTPS, please follow the steps below.</p> <ol style="list-style-type: none"> G. Obtain an SSL certificate in base-64 encoding format for encryption and decryption, and a private key in PKCS#8 format (must be unencrypted). H. Convert the required certificate content into PEM format. The SSL certificate uploaded to the camera must be in PEM format. I. In the HTTPS settings field, select "On", then click "Choose File" to select the certificate file, and then click "Upload". 	Video modes	PTZ310UNV2/PTZ330UNV2 TR315N/TR335N	PTZ310UV2/PTZ330UV2 PTZ211/PTZ231/TR315/TR335	Standard/Teams/Zoom	HDMI/IP/NDI HX2/USB (4KP60) 3G-SDI (1080P60)	HDMI/IP/USB(4KP60) & 3G-SDI (1080P60)	NDI	HDMI/IP/NDI HX3 (4KP60) & 3G-SDI (1080P60)	NA
Video modes	PTZ310UNV2/PTZ330UNV2 TR315N/TR335N	PTZ310UV2/PTZ330UV2 PTZ211/PTZ231/TR315/TR335								
Standard/Teams/Zoom	HDMI/IP/NDI HX2/USB (4KP60) 3G-SDI (1080P60)	HDMI/IP/USB(4KP60) & 3G-SDI (1080P60)								
NDI	HDMI/IP/NDI HX3 (4KP60) & 3G-SDI (1080P60)	NA								

Product:

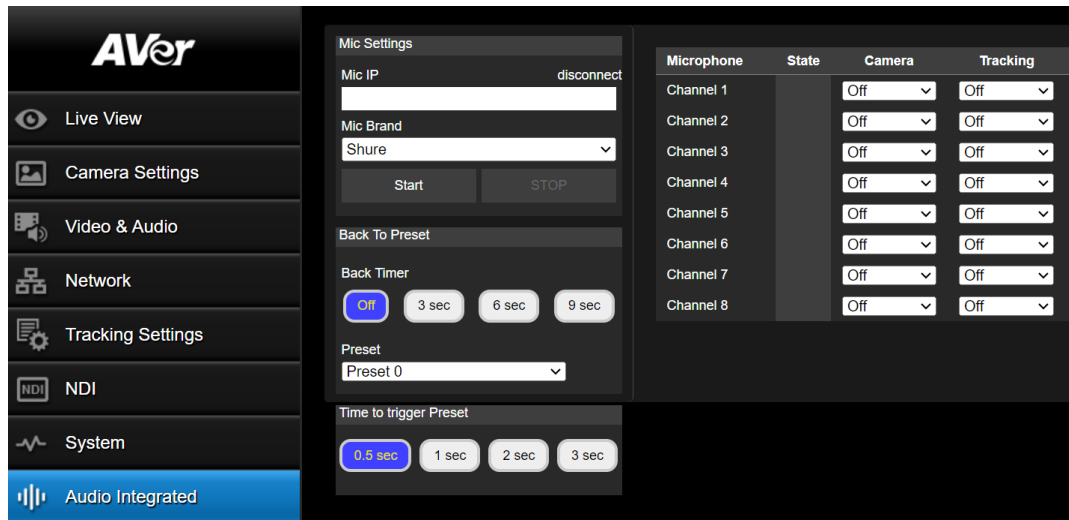
PTZ Camera: PTZ211/PTZ231/PTZ310UV2/PTZ310UNV2/PTZ330UV2/PTZ330UNV2

Tracking Camera: TR211/TR315/TR315N/TR335/TR335N

FW version	V0.0.0000.32
-------------------	---------------------

Release date	2024/5/17
---------------------	-----------

New Feature 12. Audio partner integration with Shure for Audio tracking function



*Long press (2 sec) Auto Tracking ON button from remote control to Start Audio tracking function.

*Long press (2 sec) Auto Tracking OFF button from remote control to Stop Audio tracking function.



	<p>13. NDI HX2 License key code activation feature.</p> <p>14. Able to pan/tilt camera through Onvif command.</p> <p>15. Support Bosch's new version: DICENTIS Conference System 5.0</p>									
Improvement	<ul style="list-style-type: none"> ● Optimized the “Auto Tilt” function while Auto Tracking in Hybrid mode. (this improvement only for Tracking camera TR211/315(N)/335(N)) 									
Known issue	<p>10. We recommend using the Chrome browser for configuring webpages.</p> <p>11. When using NDI video theme mode, the USB video stream will be temporarily paused in order to ensure the best possible NDI HX3 video streaming experience.</p> <p>*Simultaneous outputs in different video theme modes:</p> <table border="1" data-bbox="363 719 1326 1115"> <tr> <td data-bbox="363 719 603 819">Video modes</td> <td data-bbox="603 719 967 819">PTZ310UNV2/PTZ330UNV2 TR315N/TR335N</td> <td data-bbox="967 719 1326 819">PTZ310UV2/PTZ330UV2 PTZ211/PTZ231/TR315/TR335</td> </tr> <tr> <td data-bbox="363 819 603 969">Standard/Teams/Zoom</td> <td data-bbox="603 819 967 969">HDMI/IP/NDI HX2/USB (4KP60) & 3G-SDI (1080P60)</td> <td data-bbox="967 819 1326 969">HDMI/IP/USB(4KP60) & 3G-SDI (1080P60)</td> </tr> <tr> <td data-bbox="363 969 603 1115">NDI</td> <td data-bbox="603 969 967 1115">HDMI/IP/NDI HX3 (4KP60) & 3G-SDI (1080P60)</td> <td data-bbox="967 969 1326 1115">NA</td> </tr> </table> <p>12. HTTPS: Enable HTTPS to establish a secure connection between the browser and the camera. To enable HTTPS, please follow the steps below.</p> <ul style="list-style-type: none"> J. Obtain an SSL certificate in base-64 encoding format for encryption and decryption, and a private key in PKCS#8 format (must be unencrypted). K. Convert the required certificate content into PEM format. The SSL certificate uploaded to the camera must be in PEM format. L. In the HTTPS settings field, select "On", then click "Choose File" to select the certificate file, and then click "Upload". 	Video modes	PTZ310UNV2/PTZ330UNV2 TR315N/TR335N	PTZ310UV2/PTZ330UV2 PTZ211/PTZ231/TR315/TR335	Standard/Teams/Zoom	HDMI/IP/NDI HX2/USB (4KP60) & 3G-SDI (1080P60)	HDMI/IP/USB(4KP60) & 3G-SDI (1080P60)	NDI	HDMI/IP/NDI HX3 (4KP60) & 3G-SDI (1080P60)	NA
Video modes	PTZ310UNV2/PTZ330UNV2 TR315N/TR335N	PTZ310UV2/PTZ330UV2 PTZ211/PTZ231/TR315/TR335								
Standard/Teams/Zoom	HDMI/IP/NDI HX2/USB (4KP60) & 3G-SDI (1080P60)	HDMI/IP/USB(4KP60) & 3G-SDI (1080P60)								
NDI	HDMI/IP/NDI HX3 (4KP60) & 3G-SDI (1080P60)	NA								

Product:

PTZ Camera: PTZ211/PTZ231/PTZ310UV2/PTZ310UNV2/PTZ330UV2/PTZ330UNV2

Tracking Camera: TR211/TR315/TR315N/TR335/TR335N

FW version	V0.0.0000.28										
Release date	2023/12/20										
New Feature	<p>16. Enabled FQDN setting for direct access to the camera webpage using “http://hostname”. If there are two cameras in the LAN pool with identical hostnames, it may be difficult for the user to identify the correct one. Therefore, modifying the hostname before using this function is necessary. e.g. http://PTZ310UNV2</p> <p>17. Updated the NDI SDK to version 5.6 for NDI models in PTZ310UNV2, PTZ330UNV2, TR315N, and TR335N</p>										
Improvement	<ul style="list-style-type: none"> ● Optimized the Freed protocol and corrected the terminology from “FreeD” to “Freed”. ● Optimized the Onvif protocol for integration with Bosch meeting system. ● Optimized the auto operation smoothly movement in AI Auto Tracking function on TR211/TR315(N)/TR335(N) models. ● Bug fix: Corrected the VISCA command for the following: CAM_BrightPosInq, CAM_Live Freeze, USB Status, UVC Status ● Bug Fix: Corrected the display issue in NDI Studio Monitor where names were not showing correctly for spaces. ● Bug Fix: Resolved this issue where RTSP could not be activated when camera was power off. ● Bug Fix: Corrected the wording of SmartShoot and SmartFrame in the OSD. ● Bug Fix: Corrected bright mode setting in webpage. 										
Known issue	<p>13. We recommend using the Chrome browser for configuring webpages.</p> <p>14. When using NDI video theme mode, the USB video stream will be temporarily paused in order to ensure the best possible NDI HX3 video streaming experience.</p> <p>*Simultaneous outputs in different video theme modes:</p> <table border="1"> <tr> <td>Video modes</td> <td>PTZ310UNV2/PTZ330UNV2 TR315N/TR335N</td> <td>PTZ310UV2/PTZ330UV2 PTZ211/PTZ231/TR315/TR335</td> </tr> <tr> <td>Standard/Teams/Zoom</td> <td>HDMI/IP/NDI HX2/USB (4KP60) & 3G-SDI (1080P60)</td> <td>HDMI/IP/USB(4KP60) & 3G-SDI (1080P60)</td> </tr> <tr> <td>NDI</td> <td>HDMI/IP/NDI HX3 (4KP60) &</td> <td>NA</td> </tr> </table>		Video modes	PTZ310UNV2/PTZ330UNV2 TR315N/TR335N	PTZ310UV2/PTZ330UV2 PTZ211/PTZ231/TR315/TR335	Standard/Teams/Zoom	HDMI/IP/NDI HX2/USB (4KP60) & 3G-SDI (1080P60)	HDMI/IP/USB(4KP60) & 3G-SDI (1080P60)	NDI	HDMI/IP/NDI HX3 (4KP60) &	NA
Video modes	PTZ310UNV2/PTZ330UNV2 TR315N/TR335N	PTZ310UV2/PTZ330UV2 PTZ211/PTZ231/TR315/TR335									
Standard/Teams/Zoom	HDMI/IP/NDI HX2/USB (4KP60) & 3G-SDI (1080P60)	HDMI/IP/USB(4KP60) & 3G-SDI (1080P60)									
NDI	HDMI/IP/NDI HX3 (4KP60) &	NA									

	3G-SDI (1080P60)	
--	------------------	--

15. HTTPS: Enable HTTPS to establish a secure connection between the browser and the camera. To enable HTTPS, please follow the steps below.

M. Obtain an SSL certificate in base-64 encoding format for encryption and decryption, and a private key in PKCS#8 format (must be unencrypted).

N. Convert the required certificate content into PEM format. The SSL certificate uploaded to the camera must be in PEM format.

O. In the HTTPS settings field, select "On", then click "Choose File" to select the certificate file, and then click "Upload".

Product:

PTZ Camera: PTZ310UV2/PTZ310UNV2/PTZ330UV2/PTZ330UNV2

Tracking Camera: TR315/TR315N/TR335/TR335N

FW version	V0.0.0000.24									
Release date	2023/11/14									
New Feature	None									
Improvement	<ul style="list-style-type: none"> ● Resolved NDI function disable issue of V22. Users can now enjoy the original NDI HX3 functionality. ● Improved switch presenter functionality through click tracking on the webpage for a more optimized experience. 									
Known issue	<p>16. We recommend using the Chrome browser for configuring webpages.</p> <p>17. When using NDI video theme mode, the USB video stream will be temporarily paused in order to ensure the best possible NDI HX3 video streaming experience.</p> <p>*Simultaneous outputs in different video theme modes:</p> <table border="1"> <thead> <tr> <th>Video modes</th> <th>PTZ310UNV2</th> <th>PTZ310UV2</th> </tr> </thead> <tbody> <tr> <td>Standard/Teams/Zoom</td> <td>HDMI/IP/NDI HX2/USB (4KP60) & 3G-SDI (1080P60)</td> <td>HDMI/IP/USB(4KP60) & 3G-SDI (1080P60)</td> </tr> <tr> <td>NDI</td> <td>HDMI/IP/NDI HX3 (4KP60) & 3G-SDI (1080P60)</td> <td>NA</td> </tr> </tbody> </table> <p>18. HTTPS: Enable HTTPS to establish a secure connection between the browser and the camera. To enable HTTPS, please follow the steps below.</p> <p>P. Obtain an SSL certificate in base-64 encoding format for encryption and decryption, and a private key in PKCS#8 format (must be unencrypted).</p> <p>Q. Convert the required certificate content into PEM format. The SSL certificate uploaded to the camera must be in PEM format.</p> <p>R. In the HTTPS settings field, select "On", then click "Choose File" to select the certificate file, and then click "Upload".</p>	Video modes	PTZ310UNV2	PTZ310UV2	Standard/Teams/Zoom	HDMI/IP/NDI HX2/USB (4KP60) & 3G-SDI (1080P60)	HDMI/IP/USB(4KP60) & 3G-SDI (1080P60)	NDI	HDMI/IP/NDI HX3 (4KP60) & 3G-SDI (1080P60)	NA
Video modes	PTZ310UNV2	PTZ310UV2								
Standard/Teams/Zoom	HDMI/IP/NDI HX2/USB (4KP60) & 3G-SDI (1080P60)	HDMI/IP/USB(4KP60) & 3G-SDI (1080P60)								
NDI	HDMI/IP/NDI HX3 (4KP60) & 3G-SDI (1080P60)	NA								

FW version	V0.0.0000.22
Release date	2023/09/06
New Feature	<ol style="list-style-type: none"> <li data-bbox="405 353 1426 427"> 1. Able utilize the NTP function directly from the webpage under System > Network > NTP. <div data-bbox="405 443 963 770" data-label="Image"> </div> <li data-bbox="405 831 1398 904"> 2. Able configure the VISCA Port Mode function through the webpage by going to Network > VISCA Port Mode. <div data-bbox="405 920 1310 1061" data-label="Image"> </div> <li data-bbox="405 1122 1426 1196"> 3. Able utilize the FreeD function directly from the webpage by accessing Network > FreeD. <div data-bbox="405 1211 1305 1435" data-label="Image"> </div> <li data-bbox="405 1503 1310 1532"> 4. Able to export Log from the webpage by accessing System > Export Log. <div data-bbox="405 1547 735 1666" data-label="Image"> </div>

5. Able to continuously export logs to a selected IP and Port directly from the webpage under System > Export Log..

6. Able to configure and set the date and time from the webpage by accessing System > set Date/Time.

Date Time Dialog

Camera System Time 2023-09-05 05:32:47 PM

NTP

NTP Server pool.ntp.org

Synchronize Time with PC

Manual Date 2023-09-05 (yyyy-mm-dd)

Time 下午 05:32:47

Time Zone (GMT+08:00) Taipei

7. Able to schedule the Power-up time from the webpage by accessing System > Power Schedule.

Power Schedule

Auto Reboot Time 上午 02:00

Power Schedule Clicking on the blue box will turn it into a gray box, indicating that it is a shut-down time.

Day/Hour	0	1	2	3	4	5	6	7	8	9	10	11	12	13	14	15	16	17	18	19	20	21	22	23
Sunday	Blue	Blue	Blue	Blue	Blue	Blue	Blue	Blue	Blue	Blue	Blue	Blue	Blue	Blue	Blue	Blue	Blue	Blue	Blue	Blue	Blue	Blue	Blue	Blue
Monday	Blue	Blue	Blue	Blue	Blue	Blue	Blue	Blue	Blue	Blue	Blue	Blue	Blue	Blue	Blue	Blue	Blue	Blue	Blue	Blue	Blue	Blue	Blue	Blue
Tuesday	Blue	Blue	Blue	Blue	Blue	Blue	Blue	Blue	Blue	Blue	Blue	Blue	Blue	Blue	Blue	Blue	Blue	Blue	Blue	Blue	Blue	Blue	Blue	Blue
Wednesday	Blue	Blue	Blue	Blue	Blue	Blue	Blue	Blue	Blue	Blue	Blue	Blue	Blue	Blue	Blue	Blue	Blue	Blue	Blue	Blue	Blue	Blue	Blue	Blue
Thursday	Blue	Blue	Blue	Blue	Blue	Blue	Blue	Blue	Blue	Blue	Blue	Blue	Blue	Blue	Blue	Blue	Blue	Blue	Blue	Blue	Blue	Blue	Blue	Blue
Friday	Blue	Blue	Blue	Blue	Blue	Blue	Blue	Blue	Blue	Blue	Blue	Blue	Blue	Blue	Blue	Blue	Blue	Blue	Blue	Blue	Blue	Blue	Blue	Blue
Saturday	Blue	Blue	Blue	Blue	Blue	Blue	Blue	Blue	Blue	Blue	Blue	Blue	Blue	Blue	Blue	Blue	Blue	Blue	Blue	Blue	Blue	Blue	Blue	Blue

Improvement	<ol style="list-style-type: none"> Optimizing USB video for a seamless Zoom Room video streaming experience. Users can now utilize symbols (%+=, -_^/@.~) when creating their login names and passwords. Enhancements to the username and password fields now include the ability to toggle password visibility using an eye icon. 									
Known issue	<ol style="list-style-type: none"> We recommend using the Chrome browser for configuring webpages. When using NDI video theme mode, the USB video stream will be temporarily paused in order to ensure the best possible NDI HX3 video streaming experience. *Simultaneous outputs in different video theme modes: <table border="1" data-bbox="434 768 1399 1113"> <thead> <tr> <th>Video modes</th> <th>PTZ310UNV2/PTZ330UNV2</th> <th>PTZ310UV2/PTZ330UV2</th> </tr> </thead> <tbody> <tr> <td>Standard/Teams/Zoom</td> <td>HDMI/IP/NDI HX2/USB (4KP60) & 3G-SDI (1080P60)</td> <td>HDMI/IP/USB(4KP60) & 3G-SDI (1080P60)</td> </tr> <tr> <td>NDI</td> <td>HDMI/IP/NDI HX3 (4KP60) & 3G-SDI (1080P60)</td> <td>NA</td> </tr> </tbody> </table> HTTPS: Enable HTTPS to establish a secure connection between the browser and the camera. To enable HTTPS, please follow the steps below. <ol style="list-style-type: none"> Obtain an SSL certificate in base-64 encoding format for encryption and decryption, and a private key in PKCS#8 format (must be unencrypted). Convert the required certificate content into PEM format. The SSL certificate uploaded to the camera must be in PEM format. In the HTTPS settings field, select "On", then click "Choose File" to select the certificate file, and then click "Upload". 	Video modes	PTZ310UNV2/PTZ330UNV2	PTZ310UV2/PTZ330UV2	Standard/Teams/Zoom	HDMI/IP/NDI HX2/USB (4KP60) & 3G-SDI (1080P60)	HDMI/IP/USB(4KP60) & 3G-SDI (1080P60)	NDI	HDMI/IP/NDI HX3 (4KP60) & 3G-SDI (1080P60)	NA
Video modes	PTZ310UNV2/PTZ330UNV2	PTZ310UV2/PTZ330UV2								
Standard/Teams/Zoom	HDMI/IP/NDI HX2/USB (4KP60) & 3G-SDI (1080P60)	HDMI/IP/USB(4KP60) & 3G-SDI (1080P60)								
NDI	HDMI/IP/NDI HX3 (4KP60) & 3G-SDI (1080P60)	NA								

FW version	V0.0.0000.14									
Release date	2023/03/31									
New Feature	None									
Improvement	<ul style="list-style-type: none"> ● Enhanced the firmware upgrade progress experience. ● Enabled the LDC function on the web page. ● Added RTC (Real-Time Clock) check. 									
Known issue	<p>22. We recommend using the Chrome browser for configuring webpages.</p> <p>23. When using NDI video theme mode, the USB video stream will be temporarily paused in order to ensure the best possible NDI HX3 video streaming experience.</p> <p>*Simultaneous outputs in different video theme modes:</p> <table border="1"> <thead> <tr> <th>Video modes</th> <th>PTZ310UNV2</th> <th>PTZ310UV2</th> </tr> </thead> <tbody> <tr> <td>Standard/Teams/Zoom</td> <td>HDMI/IP/NDI HX2/USB (4KP60) & 3G-SDI (1080P60)</td> <td>HDMI/IP/USB(4KP60) & 3G-SDI (1080P60)</td> </tr> <tr> <td>NDI</td> <td>HDMI/IP/NDI HX3 (4KP60) & 3G-SDI (1080P60)</td> <td>NA</td> </tr> </tbody> </table> <p>24. HTTPS: Enable HTTPS to establish a secure connection between the browser and the camera. To enable HTTPS, please follow the steps below.</p> <p>V. Obtain an SSL certificate in base-64 encoding format for encryption and decryption, and a private key in PKCS#8 format (must be unencrypted).</p> <p>W. Convert the required certificate content into PEM format. The SSL certificate uploaded to the camera must be in PEM format.</p> <p>X. In the HTTPS settings field, select "On", then click "Choose File" to select the certificate file, and then click "Upload".</p>	Video modes	PTZ310UNV2	PTZ310UV2	Standard/Teams/Zoom	HDMI/IP/NDI HX2/USB (4KP60) & 3G-SDI (1080P60)	HDMI/IP/USB(4KP60) & 3G-SDI (1080P60)	NDI	HDMI/IP/NDI HX3 (4KP60) & 3G-SDI (1080P60)	NA
Video modes	PTZ310UNV2	PTZ310UV2								
Standard/Teams/Zoom	HDMI/IP/NDI HX2/USB (4KP60) & 3G-SDI (1080P60)	HDMI/IP/USB(4KP60) & 3G-SDI (1080P60)								
NDI	HDMI/IP/NDI HX3 (4KP60) & 3G-SDI (1080P60)	NA								

FW version	V0.0.0000.12									
Release date	2023/03/17									
New Feature	None									
Improvement	1. Optimizing USB video for a seamless Zoom Room video streaming experience.									
Known issue	<p>2. We recommend using the Chrome browser for configuring webpages.</p> <p>3. When using NDI video theme mode, the USB video stream will be temporarily paused in order to ensure the best possible NDI HX3 video streaming experience.</p> <p>*Simultaneous outputs in different video theme modes:</p> <table border="1"> <thead> <tr> <th>Video modes</th> <th>PTZ310UNV2</th> <th>PTZ310UV2</th> </tr> </thead> <tbody> <tr> <td>Standard/Teams/Zoom</td> <td>HDMI/IP/NDI HX2/USB (4KP60) & 3G-SDI (1080P60)</td> <td>HDMI/IP/USB(4KP60) & 3G-SDI (1080P60)</td> </tr> <tr> <td>NDI</td> <td>HDMI/IP/NDI HX3 (4KP60) & 3G-SDI (1080P60)</td> <td>NA</td> </tr> </tbody> </table> <p>4. HTTPS: Enable HTTPS to establish a secure connection between the browser and the camera. To enable HTTPS, please follow the steps below.</p> <p>A. Obtain an SSL certificate in base-64 encoding format for encryption and decryption, and a private key in PKCS#8 format (must be unencrypted).</p> <p>B. Convert the required certificate content into PEM format. The SSL certificate uploaded to the camera must be in PEM format.</p> <p>C. In the HTTPS settings field, select "On", then click "Choose File" to select the certificate file, and then click "Upload".</p>	Video modes	PTZ310UNV2	PTZ310UV2	Standard/Teams/Zoom	HDMI/IP/NDI HX2/USB (4KP60) & 3G-SDI (1080P60)	HDMI/IP/USB(4KP60) & 3G-SDI (1080P60)	NDI	HDMI/IP/NDI HX3 (4KP60) & 3G-SDI (1080P60)	NA
Video modes	PTZ310UNV2	PTZ310UV2								
Standard/Teams/Zoom	HDMI/IP/NDI HX2/USB (4KP60) & 3G-SDI (1080P60)	HDMI/IP/USB(4KP60) & 3G-SDI (1080P60)								
NDI	HDMI/IP/NDI HX3 (4KP60) & 3G-SDI (1080P60)	NA								