



# TR615

**Professional**

Broadcast Auto Tracking PTZ Camera

# Engineered for Precision Tracking and Professional Broadcast

The AVer TR615 is a 4K AI Auto Tracking PTZ Camera designed to meet the needs of professional AV environments including live event production, house of worship streaming, corporate communications, higher education, and government broadcasting.

Powered by AI auto tracking technology and a responsive PTZ motor, the TR615 enables accurate, hands-free subject tracking. It features a 1-inch Sony Exmor RS<sup>®</sup> CMOS sensor, 19X optical zoom, and advanced image processing to deliver clear, high-quality video across various room sizes and lighting conditions. With dual 12G-SDI, Genlock, NDI<sup>®</sup> HX3, Dante AV-H\*, and Free-D support, the TR615 offers flexible integration with modern AV systems and production workflows.

*\* Upgrade to Dante AV-H in 2Q25(Q3) with Dante Headway Licensing.*



4 Auto Tracking Modes



228 Total Zoom



1-inch Sony Sensor



12G-SDI x2



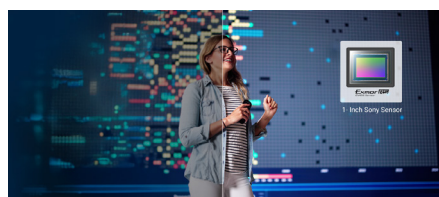
Genlock



Supports Free-D

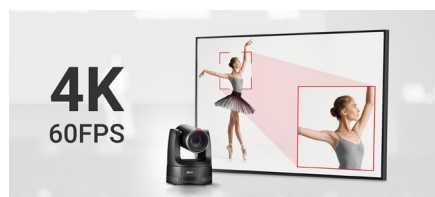
## 1- Inch Sony Sensor

Powered by a 1-inch Sony Exmor RS<sup>®</sup> CMOS sensor, the TR615 captures more light and detail for clean, high-quality 4K video—even in low-light environments. The result is accurate color, excellent clarity, and consistent performance for professional streaming and broadcast applications.



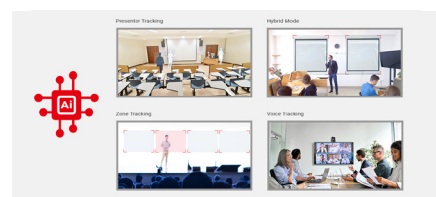
## 4K 60FPS & 19X Zoom

Delivering 4K resolution at 60fps with 19X optical and 12X digital zoom, the TR615 captures sharp, detailed video even at extended distances. Ideal for professional productions, it ensures smooth, precise imaging for dynamic scenes without sacrificing clarity.



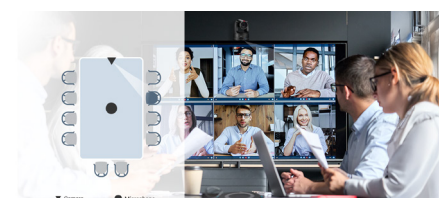
## Enhanced AI Auto Tracking

The TR615 leverages advanced AI algorithms and a next-gen SOC with 3x more computing power to deliver smooth, reliable subject tracking. It supports four auto tracking modes—Presenter, Zone, Hybrid, and Voice—offering flexible control for different environments. Stable framing is maintained even with movement or visual obstructions, enabling hands-free operation for live events, lectures, and corporate presentations.



## Voice Tracking

Deliver dynamic, voice-activated camera control without the need for programming. Pair AVer PTZ cameras with compatible mics for accurate speaker tracking using preset points. Use PTZ Link software or the MT300N for effortless setup, security, and updates.



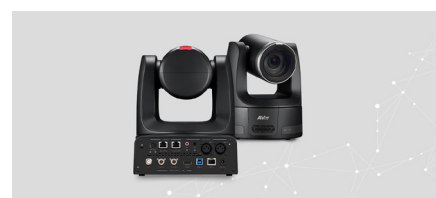
## AI Autofocus

With Intelligent Human Detection and AI-powered autofocus, the TR615 keeps the presenter in sharp focus, even as they move or as lighting and backgrounds change. An intuitive web interface allows for remote camera control and fine-tuning, making setup and operation efficient for AV technicians and production teams.



## Seamless Integration

The TR615 is built for seamless integration into professional AV and broadcast environments. It supports dual 12G-SDI, NDI<sup>®</sup> HX3, XLR audio I/O, FreeD, Genlock, SRT, and RTMP for flexible streaming and remote production. Genlock enables smooth multi-camera switching and coordinated presenter handoff, helping teams maintain a consistent, synchronized production workflow.





## Free Software for Users and AV Managers

Whether you need a simple tool to control your PTZ or TR camera, or manage over a hundred on your network, AVer has great options. [CaptureShare](#) and [PTZ Management](#) for desktop and [AVer PTZ Control Panel](#) for iPad have you covered. For new voice tracking features, look to [PTZ Link](#). Visit our [support page](#) for easy download of our desktop software.

## Compatible With



## Product Specifications

Camera	Sensor Size	1" 4K Sony Exmor RS® CMOS
	Total Picture Elements	20.92 Megapixels
	Effective Picture Elements	17.25 Megapixels
	Output Resolutions	4K/60, 4K/59.94, 4K/50, 4K/30, 4K/29.97, 4K/25, 1080p/60, 1080p/59.94, 1080p/50, 1080p/30, 1080p/29.97, 1080p/25, 1080i/60, 1080i/59.94, 1080i/50, 720p/60, 720p/59.94, 720p/50
	Minimum Illumination	1.4 lux (IRE50, F2.8, 30fps)
	S/N Ratio	≥ 50 dB
	Gain	Auto, Manual
	TV Line	1600 (Center)
	Shutter Speed	1/4 to 1/10,000 sec
	Exposure Control	Auto, Manual, Priority AE (Shutter, IRIS), BLC, WDR
	White Balance	Auto, Manual, ATW, One Push, Indoor, Outdoor
	Optical Zoom	19X
	Digital Zoom	12X
	Gain	Auto, Manual
	Total Zoom	228X
	Viewing Angles	DFOV: 77.8° (Wide) to 4.5° (Tele) HFOV: 69.5° (Wide) to 3.5° (Tele) VFOV: 41.5° (Wide) to 2.3° (Tele)
	Focal Length	F = 9.79 mm (Wide) to 186.39 mm (Tele)
	Aperture (Iris)	F = 2.8 (Wide) to 4.5 (Tele)
	Minimum Working Distance	1.5 m (Wide), 5.0 m (Tele)
	Pan / Tilt Angles	Pan: ±170°, Tilt: +90° / -30°
	Pan / Tilt Speed (Manual)	Pan: 0.05° to 100° / sec, Tilt: 0.05° to 100° / sec
	Preset Speed	Pan: 200° / sec, Tilt: 200° / sec
	Preset Positions	10 (IR), 256 (RS-232 / RS-422 / IP)
	Camera Control - Interface	RS-232 (DIN8), RS-422 (RJ45), IP, USB
	Camera Control - Protocols	VISCA (RS-232 / RS-422 / IP), PELCO-D & PELCO-P (RS-232 / RS-422), CGI (IP), USB, ONVIF
	Image Processing	Noise Reduction (2D / 3D), Flip, Mirror, WDR, BLC
	Power Frequencies	50 Hz, 60 Hz
AI Technology	Auto Tracking Modes	Presenter Mode, Zone Mode, Hybrid Mode
	AI Feature	Multi-Presenter Detection
Audio	Channel	2ch Stereo
	Codec	AAC-LC (48 K)
	Sample Rates	48 KHz
Privacy Protection Mechanisms	Protection Mode	Sleep Mode
I/O Interface	Video Output	12G-SDI x 2, HDMI, IP, USB
	Audio Output	12G-SDI x 2, HDMI, IP, USB
	Audio Input	Mic in, Line in, XLR
	Genlock Input	BNC
General	Power Requirement	AC 100 - 240V to DC 12V/5A
	Power Consumption	32.4W
	PoE	PoE++
	Dimensions (W x H x D)	202.5 x 304.5 x 231.5 mm
	Net Weight	4.3 (±0.1) kg
	Application	Indoor
	Tally Lamp	Yes
	Security	Kensington Slot
	Remote Control	Infrared
	Operating Conditions	Temperature : 0 °C to +40 °C ; Humidity : 20% to 80%
	Storage Conditions	Temperature : -20 °C to +60 °C ; Humidity: 20% to 95%
	Sustainability	Plastic Material: ABS; Sustainability Method: PCR-PC
IP Streaming	Resolution	4K 60fps
	Network Video Compress Formats	H.264, H.265, MJPEG
	Network Video Compress Formats	AAC-LC (48 K)
	Maximum Frame Rate	4K 60fps
	Bit-Rate Control Modes	VBR, CBR (selectable)
	Range of Bit-Rate Setting	512 Kbps to 64 Mbps
	Network Interface	10 / 100 / 1000 Base-T
	Multi-Stream Capability	4K 60fps Standard Mode, Zoom Mode, NDI® Mode: 5 (RTSP, HDMI, USB, 12G-SDI, & NDI®) Teams Mode: 1 (USB)
	Network Protocols	IPv4, TCP, UDP, ARP, ICMP, IGMP, HTTP, HTTPS, DHCP, RTP / RTCP, RTSP, RTMP, SRT, HLS, NDI, LLDP, VISCA over IP, ONVIF
	NDI® HX3	Yes (Pre-installed)
	NDI® Embedded Bridge	Yes
	Dante AV-H	Yes (Available in 2025Q3)
	Camera Tracking Data Output	Supports Free-D Type D0 / D1
USB	Connector	USB 3.2 Gen 1
	Video Format	MJPEG, YUY2
	Audio Format	PCM
	Maximum Video Resolution	4K
	USB Video Class (UVC)	UVC 1.1
	USB Audio Class (UAC)	UAC 1.0

Product Specifications

Web UI	Live Video Preview	Yes
	Camera PTZ Control	Pan, Tilt, Zoom, Focus, Preset Control
	Camera/Image Adjustment	Exposure, White Balance, Picture
	Network Configuration	DHCP, IP Address, Gateway, Subnet Mask, DNS
	Supported Web Browsers	Chrome, Edge, Safari
Software Tools	Device Utility	Supports Windows® 7 or later, macOS® 10.14 or later
	Enterprise Management	Support Windows® 10 or later
	Room Management	Supports Windows® 7 or later, macOS® 11.6 or later
	Cloud Management	Supports Windows® 7 or later, macOS® 10.14 or later
	PTZ Control Panel	Supports iOS & iPadOS® 11 or later
	PTZ Link	Supports Windows® 7 or later, macOS® 10.14 or later
	OBS Plugin for PTZ Cameras	Supports Windows® 8 or later, macOS® High Sierra v10.13 or later
	CaptureShare	Supports Windows® 7 or later, macOS® 10.14 or later

Warranty	Camera	5 Years
	Accessories	1 Year
Package Contents	Camera, Remote Control, RS-232 In/Out Cable, Din 8 To D-Sub 9 Cable, Power Adapter, Power Cord, Cable Tie (x7), M2 x 4 mm Screws (x6), M3 x 6 mm Screws (x3), 1/4"-20L 6.5mm Screws (x2), Cable Fixing Plate (x3), Ceiling Mount Brackets (x2), Drilling Paper, Quick Start Guide	
Optional Accessories	AVer CL01 PTZ Camera Controller, L-Type Wall Mount	
Ordering Info	Part Number	PATR615V1

*\* Specifications may vary depending on location and are subject to change without notice. If you have any questions about specifications, please contact your regional dealer.*  
*† Exmor RS® is a trademark of Sony Group Corporation or its affiliates.*



**AVer Information Inc. Americas**  
44061 Nobel Drive, Fremont, CA 94538  
Toll free 1.877.528.7824 T 408.263.3828 F 408.263.8132

©2024 AVer Information Inc. All rights reserved.  
All brands and logos are trademarks of their respective companies. Specifications subject to change without notice

[pro.averusa.com](https://pro.averusa.com)