



#POWERUPLEARNING

Table of Contents

About AVer	Why AVer	Audio Solutions	Document Cameras
03	04	06	12
AVerTouch Software	Classroom Cameras	Device Charging Solutions	AVer Service & Warranty
20	22	26	34
Comparison Chart			
36			

About AVer

AVer’s legacy in technology began with the founding of AVerMedia Technology in 1990. In January 2008, AVer Information Inc. was established as a spin-off from AVerMedia Information, Inc., with a focused mission to transform education through innovative technology. Today, AVer is a leading provider of award-winning EdTech solutions that enhance student-teacher engagement and improve learning outcomes. Our products are built to support both in-class instruction and hybrid or distance learning environments. From cutting-edge document cameras and AI-powered classroom cameras to smart charging carts and instructional audio systems, AVer offers powerful, easy-to-use solutions for today’s K–12 classrooms.





Why AVer

From the moment your partnership with AVer begins, we are dedicated to providing you with exceptional solutions combined with best-in-class service, support and relevant classroom resources in order to ensure our products have the maximum impact to your lesson delivery and your student reception. From free on-site professional development, to webinars, training videos, and even lesson plan resources, AVer helps to enhance your classroom applications of our products. Combined with free US-based, live phone, email and chat technical support, AVer has you covered from start to finish.

“I would definitely recommend AVer products strongly for any school district. It has been one of the most valuable investments Harmony has made.”

- Burak Yilmaz, M.Ed. - District Project Director, Harmony Public Schools, Houston TX



Easy-to-Use
Technology



Award-Winning
Education Solutions



Best-in-Class
Customer Care



America's Best Doc
Cam Warranty



Free Product
Training

AUDIO SOLUTIONS

Changing the Way Students Listen and Learn in the Classroom



Classroom Audio Solution

Part #: AMPLISAA5

Sound amplification up to 1500 sq ft

Plug & play

Anti-howling technology

Mix audio sources flawlessly without compromise

8 to 10 hours of talk time





AmpliWave Lite

Part #: AMPLILITE

Connect to Existing Speakers

Plug & play

Anti-howling technology

Mix audio sources

8 to 10 hours of talk time



AmpliWave Go

Part #: AMPLIWGOB

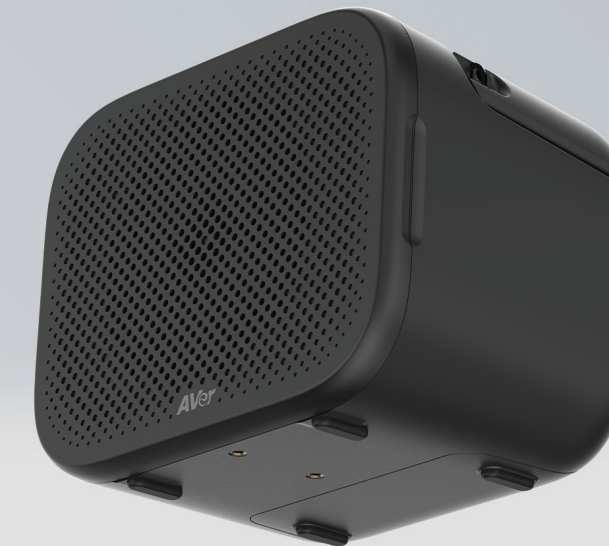
Bluetooth Speaker

Plug & play

8-10 hr battery life

Audio Ducking Feature

Wireless Mic Included

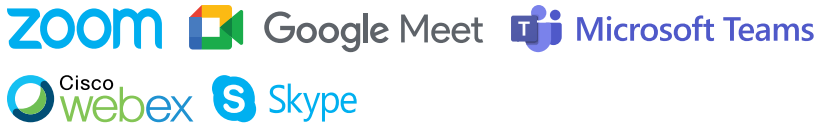


DOCUMENT CAMERAS

Ready for In-Class or Hybrid Instruction

“The cameras I’ve had in my class before were bulky, and you wouldn’t even think to take them from your classroom to go home with them, but now with my AVer Doc Cam, if there is another quarantine and the school does shut down again, the two items I’m going to take are my laptop and my AVer Document Camera. ”

- Stefanie Lump, 5th Grade Science Teacher, Surprise, AZ





M11-8M

HDMI Document Camera

Part #: VISIONM118M

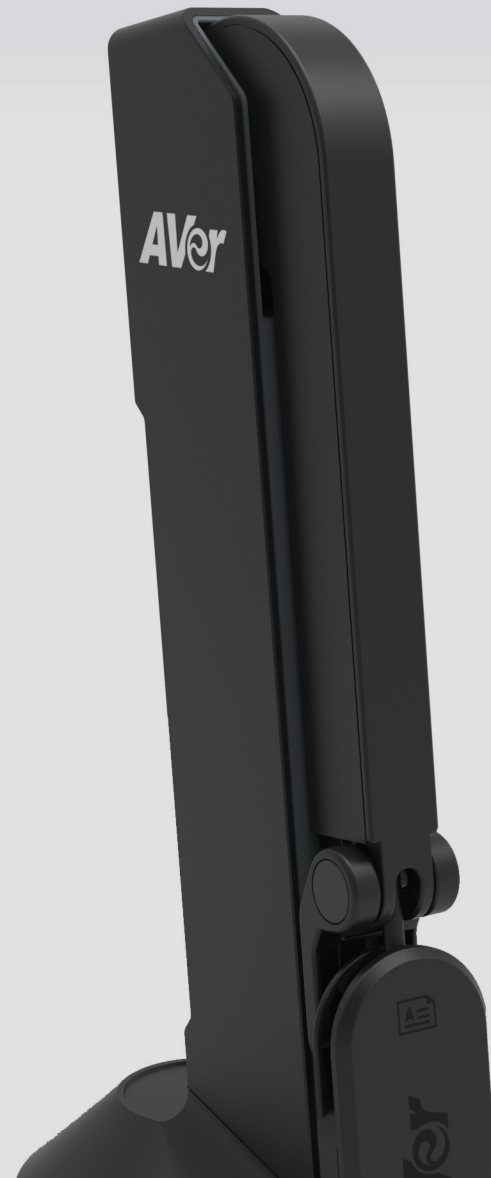
Portable, compact and versatile for multiple instructional strategies

8 MP with 1080p at 60 FPS for crystal clear video

Built-in mic and annotation

Use as a document camera or HD webcam

USB and HDMI connectivity



F50+

4K Versatile FlexArm Document Camera

Part #: VISF50PLS

13 MP outputs 4K video at 60 FPS

10x optical and 23x digital zoom

HDMI, USB, and VGA outputs

Built-in mic and light

Flexible design with locking camera head



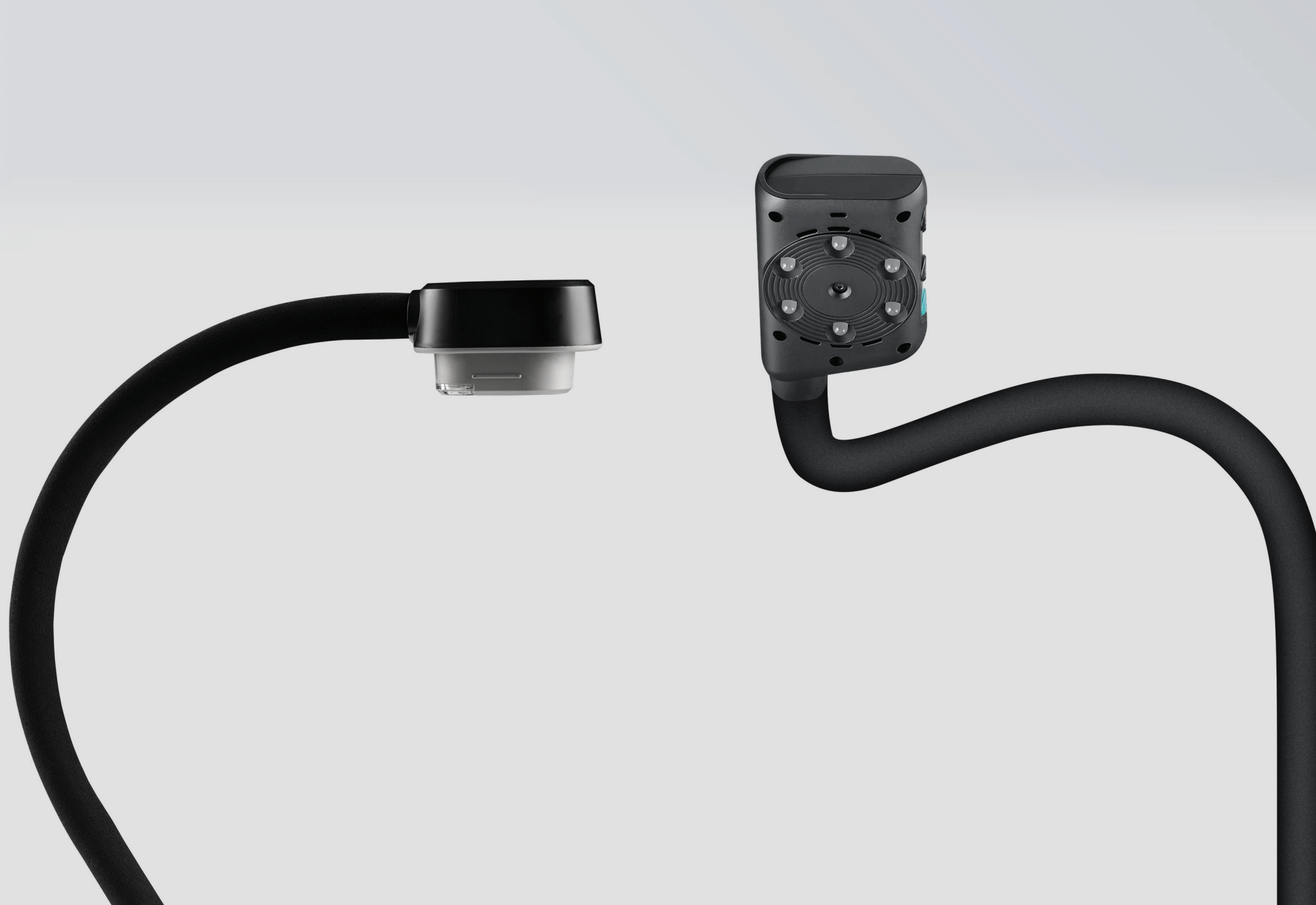


F17+

Portable FlexArm Document Camera

Part #: VISF17PLS

- 13 MP at 60 FPS for clear and smooth video
- 23x digital zoom to focus on small objects
- HDMI and USB-C input and output to connect to any classroom display
- Flexible neck to position the camera head in any direction
- Record and save lessons



U50+

Portable FlexArm Document Camera

Part #: VISU50PLS

- 8 MP at 60 FPS for clear and smooth video
- 16x digital zoom
- Built-in adjustable LED lights
- Simple setup with only one USB cable
- Record and save lessons





M15W

Compact Wireless Document Camera

Part #: VISIONM15W
School network SSID or Point-to-Point Wi-Fi connection
13 MP with 4K output
23x digital zoom
Foldable, compact design to easily move or store
Instantly upload recorded lessons and images to the cloud
<div><div></div><div></div><div></div><div></div></div>



M11WB

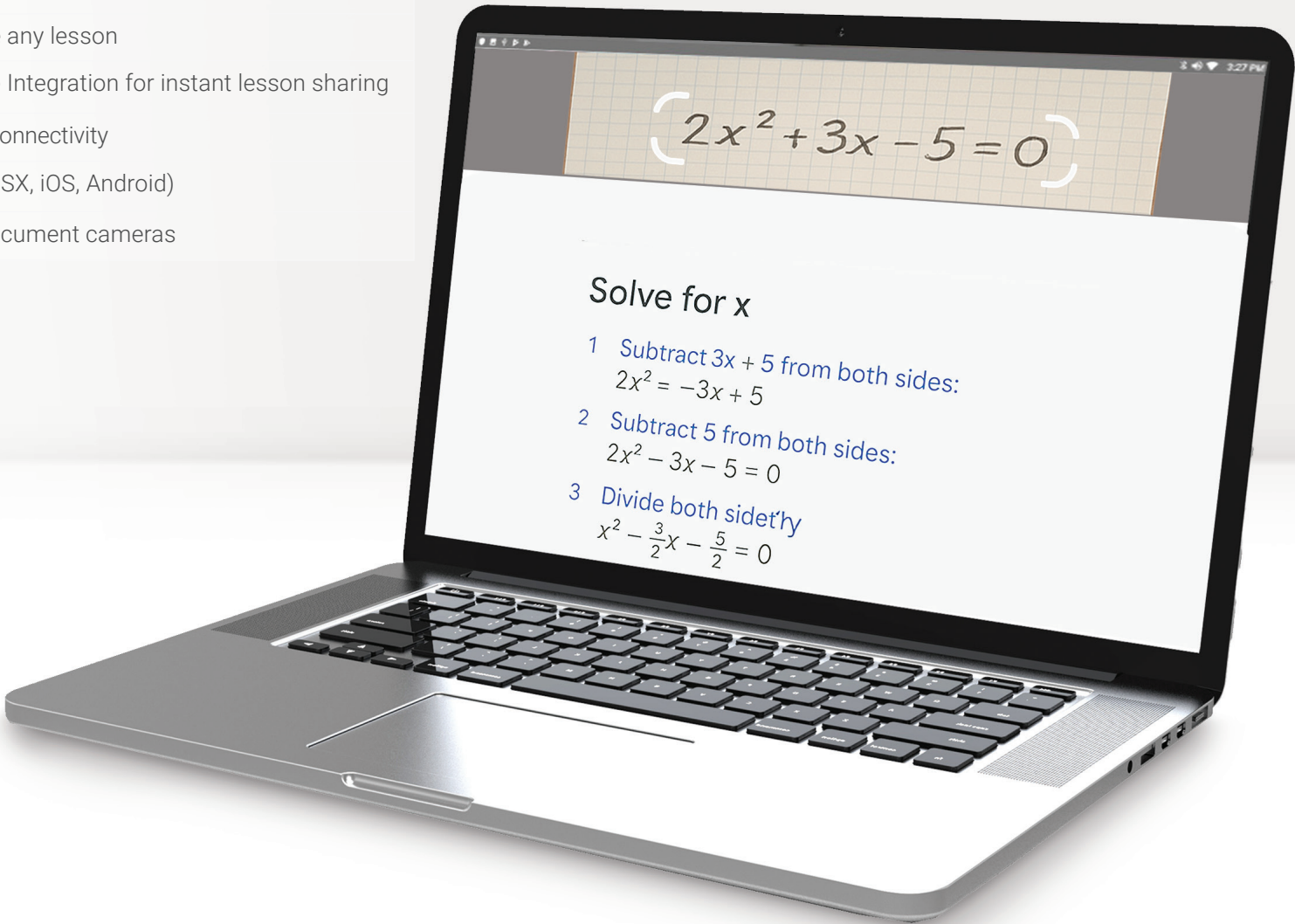
Small Footprint Wireless Document Camera

Part #: VISIM11WB
Rechargeable/removable battery
USB-C output
Google Lens integration
13 MP with 4K output
29x digital zoom

AVerTouch Software

Interactive Document Camera Control, Recording, Annotation and Sharing Software

- One-Touch connect with wired or wireless AVer document cameras
- Built-in annotation tools to enhance any lesson
- Lesson recording with Google Drive Integration for instant lesson sharing
- Supports School WiFi, P2P, & wired connectivity
- Available on all platforms (Win10, OSX, iOS, Android)
- Supports all new & existing AVer document cameras



*Google Lens feature is compatible with M11WB, F17+, F50+



ARTIFICIAL INTELLIGENCE (AI) AUTO TRACKING CLASSROOM CAMERAS

Automatic PTZ Cameras to Support Real-Time Virtual Instruction

“After looking at other tracking camera equipment, the AVer Auto Tracking did not rely on audio, so if I moved over ‘here’ the other camera waited until I spoke before it found me. We decided that the camera with the best AI tracking module would give us the most flexibility we needed for various and unforeseen scenarios.”

- Jose Tagle, Director of Technology with the Buckley School



Google Meet



Microsoft Teams



Cisco webex



Skype



intel UNITE





DL30

AI Auto Tracking Camera

Part #: PAVPTDL30

- Hands-free AI for full or half body tracking
- 12x optical zoom
- Privacy mode
- Recording and saving capabilities
- Compatible with all major video conferencing platforms



DEVICE CHARGING SOLUTIONS

Intelligent Classroom Device Charging and Storage Solutions



X16

16 Device B.Y.O.C.™ (Build Your Own Cart) Charging Cabinet

Part #: CHRGEX016 Mobile Kit Part #: CHRGX16MK

Safely charge up to 16 devices up to 15"

Removable and adjustable slot dividers to charge other devices

Dual locking simple cable management

Additional AC adaptors with integrated locks

Stackable and wall mountable



Standard Charging | Charges all devices at once



Standard Charging | Charges all devices at once



B30

30 Device Charging Cart

Part #: CHRGE030

Charges 30 devices with up to a 14" screen

Compact and lightweight design to save space and easy mobility

Simultaneous charging for even and safe powering

Smart cable management for simple maintenance

Secure with locking front door and two keys included





E36cv

36 Device Efficient and Economical Charging Cart

Part #: CHRGE36CV

- Charges 36 devices with up to a 15" screen
- Intelligent charging with advanced cable management
- Supports multiple devices and brands
- Economical without sacrificing quality
- Small footprint with easy maneuverability



30 averusa.com/education



Smart Cycle Charging | Charges devices on the first power strip and alternates every 20 minutes to charge each power strip



Smart Cycle Charging | Charges devices on the first power strip and alternates every 20 minutes to charge each power strip



E30p


USB-C Pre-Wired Charging Cart

Part #: CHRGE30P

- Charges 30 devices with up to 15" screen
- Pre-wired for easy, plug-and-play setup
- Convenient additional storage
- Compact double-door design saves space
- Smart cycle charging protects devices and optimizes power use
- UL certification



averusa.com/education 31

 Adaptive Intelligent Charging | Monitors devices and determines the best charging sequence. sends additional power to external outlets once devices are fully charged




X42i

42 Device Intelligent Charging Cart

Part #: CHRGEX42i

- 42 device charging cart supporting up to 15" screens
- Intuitive charging knows which devices need charging and which don't
- Advanced cable management makes maintenance simple
- Safe and secure with front and back combo locks
- Direction casters make mobility while wheel locks keep it stationary



 Adaptive Intelligent Charging | Monitors devices and determines the best charging sequence. sends additional power to external outlets once devices are fully charged




X30i

30 Device Intelligent Charging Cart

Part #: CHRGEX30i

- Charge 30 devices with up to a 15" screen
- Intelligent charging technology knows which devices need charging
- Patented cable management makes changes simple
- Small footprint saves valuable classroom space
- Supports multiple device brands and models



 Adaptive Intelligent Charging | Monitors devices and determines the best charging sequence. sends additional power to external outlets once devices are fully charged



Designed for
 Microsoft
Surface

C36i+

36 Device Intelligent Charging Cart

Part #: CHRGC36i+

- Charges 36 devices with up to a 15" screen
- Adaptive intelligent charging with additional outlets for other devices
- Smart cable management makes maintenance simple
- Customizable slot dividers to accommodate different devices
- Smooth slide-out shelves for easy pulling and placing





Unmatched Service and Support

AVer Service & Warranty

Tracking Camera Warranty

- ▶ 3-Yr Limited Warranty*
- ▶ 3-Yr Free 2-Way RMA Shipping*
- ▶ 3-Yr Worry-Free Standard Advanced Replacement*
- ▶ Technical Support

Document Camera Warranty

- ▶ 5-Yr Limited Warranty*
- ▶ 5-Yr Free 2-Way RMA Shipping*
- ▶ 5-Yr Worry-Free Standard Advanced Replacement*
- ▶ Technical Support

Charging Solution Warranty

- ▶ 10-Yr Limited Warranty (Mechanical)
- ▶ 5-Yr Limited Warranty (Electrical)
- ▶ Technical Support

Audio Solution Warranty

- ▶ 5-Yr Limited Warranty (Mechanical)
- ▶ 1-Yr Limited Warranty (Electrical)
- ▶ 3-Yr 2-Way RMA Shipping
- ▶ 3-Yr Worry Free Standard Advance Replacement
- ▶ Technical Support




* Available for Continental USA/Alaska/Hawaii only. Available for select models. Refer to warranty table on website.
* 5-Year Document Camera Warranty available for select models, please check the individual model details for actual warranty duration.

19 Years of Happy Customers




“Another reason for us purchasing AVer classroom solutions is the warranty program offered. Having a 5-year replacement warranty is a piece of mind that we value.”

- John Diehl, Director of Instructional Technology, Bedford Area School District

Document Camera Comparison Chart

			
	U50+	F17+	F50+
Part Number	VISU50PLs	VISF17PLS	VISF50PLS
Sensor (MP)	8	13	13
Wireless Connectivity	✗	✗	✗
Digital Zoom	16X	23X	23X
Optical Zoom	N/A	N/A	10X
Max Display Resolution	Up to 8M (3264 x 2448)	4K	4208 x 3120 via USB
Shooting Area	Larger than A3 Landcape	23.82" x 15.95"	16.9" x 12.2"
Max FPS	60 FPS	60 FPS	60 FPS
External Storage	✗	SD/USB	SD/USB
USB to PC	USB Mini	USB -C	USB -C
Built-in LED	✓	✓	✓
Built-in Mic	✓	✓	✓
Speaker Out	✗	✓	✓
Onboard Recording	✗	✓	✓
Onboard Annotation	✗	✗	✓
HDMI	✗	In/Out	In/Out
VGA	✗	In/Out	In/Out
Onboard Camera Controls	✓	✓	✓
Remote Control	✗	✓	✓
Rechargeable Battery	✗	✗	✗
Warranty	2 years	5 years	5 years
Advanced Replacement	N/A	5 years	5 years
Free 2-way RMA Shipping	✓	✓	✓

Mechanical Arm

		
M11-8M	M11WB	M15W
VISIM118M	VISIM11WB	VSIONM15W
8	13	13
✗	✓	✓
20X	29X	23X
N/A	N/A	N/A
3168 x 2376 via USB	4K	4K
16.53" x 12.4"	Larger than A3 Landscape	16.77" x 12.32"
60 FPS	60 FPS	60 FPS
Micro SD/USB	✗	✗
USB -Mini	USB -C	USB -Mini
✓	✓	✓
✓	✓	✓
✗	✗	✗
✓	✗	✗
✓	✗	✗
Out	✗	Out
✗	✗	✗
✓	✓	✓
✗	✗	✗
✗	✓ (removable)	✓
3 years	3 years**	3 years**
3 years	3 years	3 years
✓	✓	✓

Charging Solution Comparison Chart

- Small (16 devices)
- Medium (30 devices)
- Large (36-42 devices)



	X16	B30	X30i
Part Number	CHRGEX016	CHRGEB030	CHRGEX30i
Device Capacity	16	30	30
Supported Devices	Laptops/Chromebooks/Tablets up to 15" screens	Laptops/Chromebooks/Tablets up to 15" screens	Laptops/Chromebooks/Tablets up to 15" screens
Slot Dimensions (W x D x H)	1.02" x 16.5" x 12"	0.95" x 14.74" x 10.2"	1.42" x 15.75" x 10.63"
Cart Dimensions (W x D x H)	24.18" x 19.03" x 17.63"	24.6" x 21.3" x 38.1"	25.06" x 25.12" x 42.13"
LED Indicator Lights	✗	✗	✓
Power Management	Standard Charging	Standard Charging	Adaptive Intelligent Charging
Cable Management (Organized Cabling System)	Adjustagble Clip in Dividers	Metal Clips	Adjustagble Clip in Dividers
Individual AC Adapter Compartments	✗	✗	✓
Shelves	Fixed	Fixed	Fixed
Net Weight	57.54lbs	88 lbs	134 lbs
External Power Outlets	0	0	2
Slot Divider Type	Adjustable	Fixed	Adjustable
Warranty (Mechanical/Electrical)	10 year / 5 year	10 year / 5 year	10 year / 5 year
3D View QR Code			



E30p	E36cv	C36i+	X42i
CHRGEE30p	CHRE36CV	CHRG C36i+	CHRGEX42i
30	36	36	42
Laptops/Chromebooks/Tablets up to 15" screens	Laptops/Chromebooks/Tablets up to 15" screens	Laptops/Chromebooks/Tablets up to 15" screens	Laptops/Chromebooks/Tablets up to 15" screens
1.26" x 14.96" x 10.24"	1.26" x 14.96" x 10.24"	1.42" x 14.96" x 10.24"	1.34" x 15.75" x 10.63"
27.09" x 25.20" x 42.83"	27.09" x 25.20" x 42.83"	31.1" x 25.0" x 42.1"	30.57" x 25.12" x 42.13"
✗	✗	✓	✓
Smart Cycle Charging	Smart Cycle Charging	Adaptive Intelligent Charging	Adaptive Intelligent Charging
Metal Clips	Metal Clips	Adjustagble Clip in Dividers	Adjustagble Clip in Dividers
✓	✓	✓	✓
Fixed	Fixed	Sliding	Fixed
129.6 lbs	132.28 lbs	176 lbs	154 lbs
0	0	2	2
Fixed	Fixed	Adjustable	Adjustable
10 year / 5 year	10 year / 5 year	10 year / 5 year	10 year / 5 year



To learn more, visit averusa.com/education

AVer Information Inc. Americas | averusa.com | 44061 Nobel Drive, Fremont, CA 94538 | Toll Free 1.877.528.7824

©2025 by AVer Information Inc. All rights reserved. All products and features are subject to change. All brand names and logos are trademarks of their respective companies.



Facebook/LinkedIn/YouTube
AVer USA
Twitter [@averinformation](https://twitter.com/averinformation)