

## Setup Screen Share on AVer's interactive flat panel with a Windows10 laptop

### AVer IFP

1

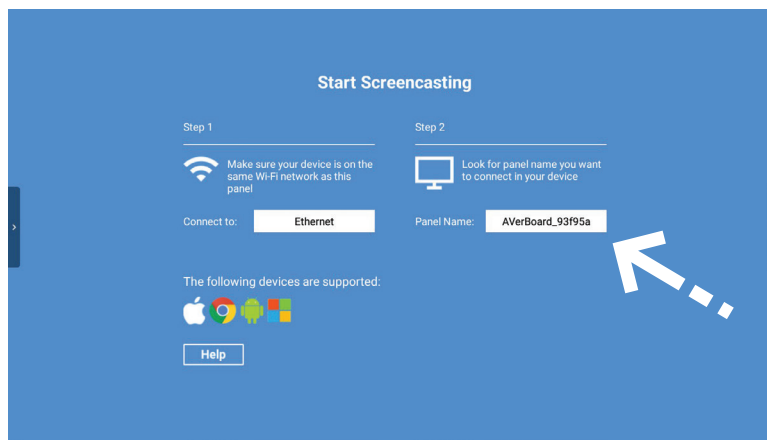
Setup the Wi-Fi network connection.

2

Make sure AVer's interactive flat panel and the sharing device are on the same network.

3

Launch the **Screen Share** app.



### Windows10 Laptop

1

Open Action Center and click **Connect**.

2

Select **AVerBoard** from the list.

