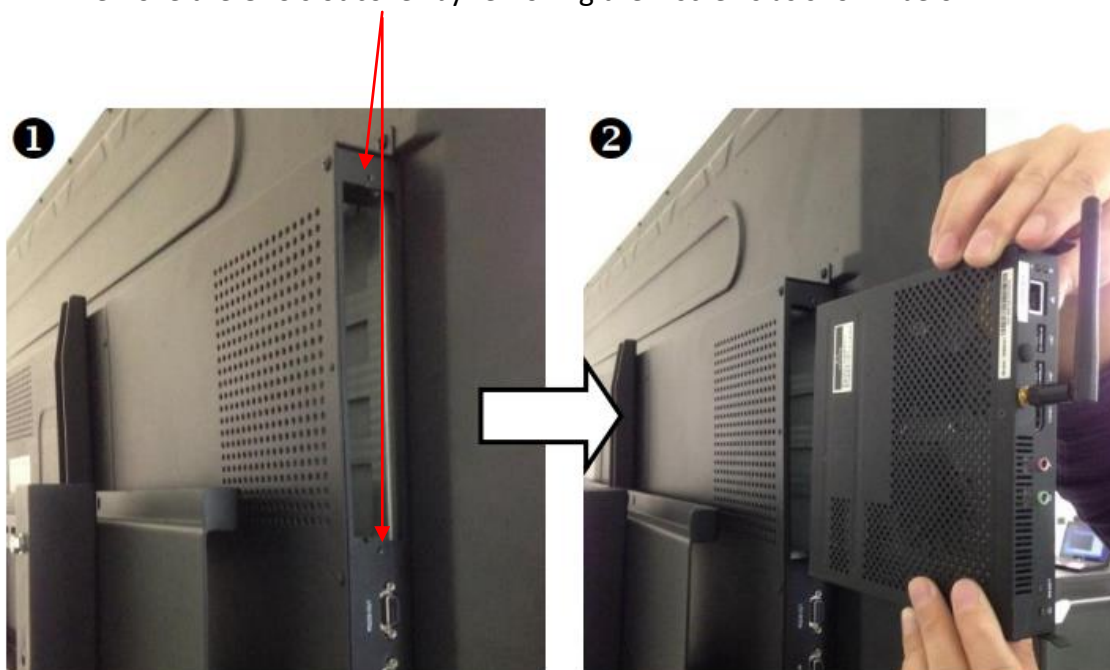


AVer OPS Computer for the CP Series IFP Installation Guide

Thank you for purchasing the AVer OPS Computer. Please use the installation guide below to guide the installation.

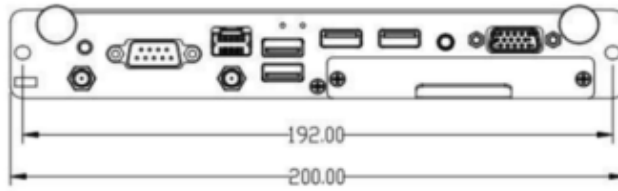
Important! The OPS computer does not support hot-swappable operation (replacing or adding the OPS to the IFP without shutting down the IFP completely). Simply plugging in or unplugging the OPS from the IFP while it is in operation may damage the OPS computer or the IFP.

1. Please power off the AVer IFP completely.
2. Remove the OPS slot cover by removing the 2 screws as shown below

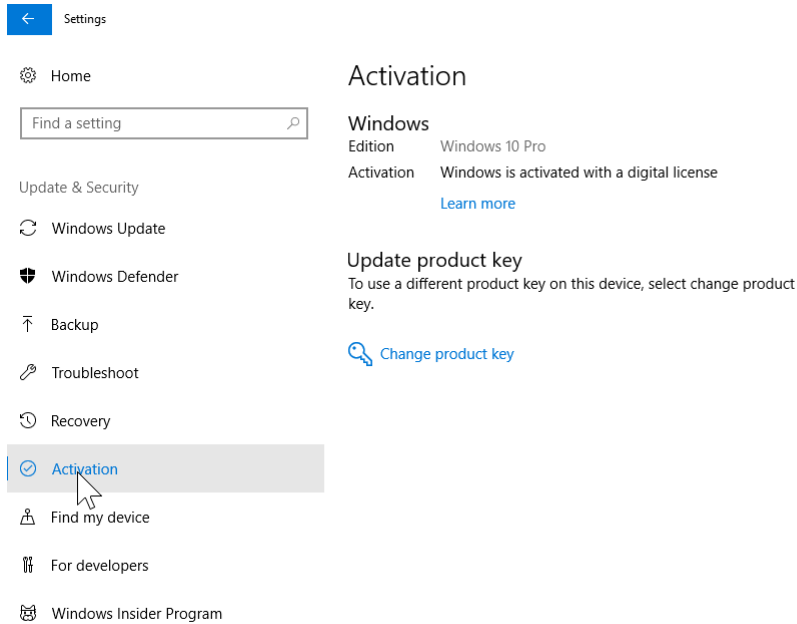


3. Slide in the OPS computer as shown in the picture (Top right)
4. The side with the fan should face outwards.
5. Now make sure the screws are tightened.

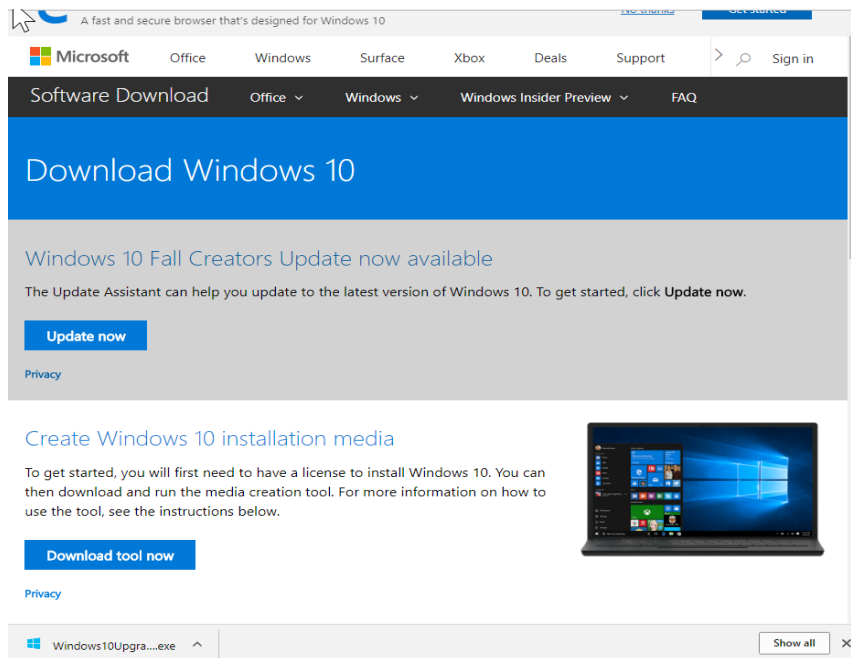
Make sure both screws are
tighten



6. You can now turn on the IFP system power.
7. Switch to the OPS source and the OPS will automatically power on.
8. You would now need to activate the windows 10 OS pre-installed on the system.
9. Launch the Windows setup screen and navigate to the “Update & Security” section.
10. Click on “Activation” and select the option under “Update product key”.



11. Once windows is activated, please launch internet explorer and go to:
<https://www.microsoft.com/en-us/software-download/windows10>
12. Click on “Update now” and run the “Windows10Upgrade.exe” application and follow the on screen instructions. Please be patient as the upgrade process may take up to an hour or more.



* Note although the Windows 10 64bit Pro OS is pre-installed, it isn't activated. The license isn't included in the package. Users are advised to use their existing license or corporate license to officially activate the system.

OPS Specifications (For shipments after August 2018)

| | |
|------------------|--|
| Part number | IFI5OPS4I |
| Compatible With | CP654I, CP754I, CP864I |
| Housing Material | SECC |
| Dimension (mm) | 200(L) x 119(W) x 30(H)mm |
| Weight | 1.0 kg |
| Form Factor | OPS |
| CPU | Intel® 7 th Gen I5-7200U Dual Core 4 Threat 2.5GHz Turbo Boost 3.1GHz 3MB L3 Cache TDP only 15W |
| Chipset | Intel® 7 th Gen SOC |
| Memory | 8GB DDRIII (SO-DIMM x 2) 1600MHz Up to 16GB |
| Graphics | Intel HD 620 Graphics (Supports 4K) |
| Audio | Integrated High Definition Audio Stereo |
| LAN | Intel I219 Gigabit Network |
| WIFI | Intel 3165 AC (2.4G/5G) |
| Storage | mSATA SSD 128GB |
| Front Panel I/O | |
| Power Switch | x 1 |

| | |
|-----------------------|--|
| LAN RJ45 | x 1 |
| USB2.0 | x 1 |
| USB3.0 | x 3 |
| COM Port | x 1 |
| Power LED and HDD LED | x 2 |
| Mic In / Speaker | x 1 |
| Wifi Antenna Ports | x 2 |
| Rear Panel I/O | JAE TX25A Plug Connector 80 Pin |
| Cooling | Active With Fan |
| Power Input | 12 ~ 19V DC |
| Hot Swappable | No |
| Max Power | 15W |
| Standby Power | 0.5W |
| O/S | Windows 10 Professional 64bit English Pre-installed. NOT Activated. Note Windows license is not included in the system |

Note: Specifications subject to change without notice



