

CAM520 Pro2

zoom

Certified

Next level video conference camera

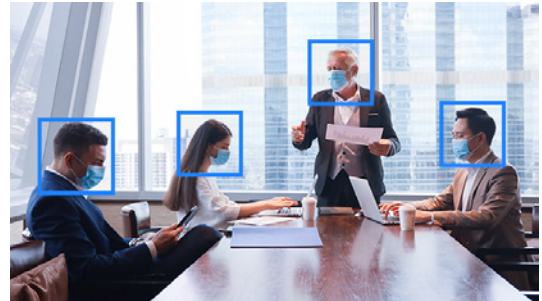
Intelligently present every detail with 18X total zoom

Present in ultimate clarity for an engaging and natural meeting experience with the CAM520 Pro2. Zoom in up to 18X total zoom (12X optical) on whiteboard content, documents, or people at an 84° FOV up to 60 feet away without any distortion. Stream and record vibrant videos in full HD 1080p video at 60fps via USB 3.1 streaming or RTSP/RTMP H.264 broadcasting.



Improved SmartFrame technology

Keep meetings efficient and safe with AVer's improved SmartFrame. Next-generation facial and body detection ensures that everyone is visible on the screen up to 10 meters away, even with masks on.



Custom control integrations

The CAM520 Pro2 offers built-in advanced integration capabilities, perfect for a controlled environment to allow users to connect the CAM520 Pro2 via RS232 or Visca over IP to joystick controllers and control systems.



RS232
VISCA support



Enhanced camera management

Camera management has never been this easy! Manage your devices with PoE+ connectivity for power, USB virtualization, and web-based management. With our enhanced management features, you'll never have to walk to the other side of campus to operate the camera.



Specifications

Camera

- Sony Exmor: 1/2.8 low lux CMOS 2M pixel
- Resolution: (16:9) 1920x1080, 1600x900, 1280x720, 960x540, 848x480, 800x448, 640x360, 424x240, 320x180; (4:3) 800x600, 640x480, 480x360, 320x240 at 60, 30, 15fps
- SmartFrame for automatic FOV adjustment to fit all participants
- True WDR up to 120db: Superb backlight compensation technology for optimizing light balance in high-contrast conditions
- Zoom: 18X total zoom (12X optical zoom)
- Field of view (D/H/V): 84.5°/77.5°/48°
- Lens focal length: 3.9mm (wide) ~ 47.3mm (tele)
- Lens F#: 1.8 (wide) ~ 2.8 (tele)
- Mirror, Flip, AE, white balance: auto, manual override via PTZApp2
- Minimum focus distance: 1.5m
- Standard tripod screw holes and Kensington slot
- People-counting API: enterprises and third-party software providers can obtain people-counting data for better understanding of meeting-space usage

Motorized pan and tilt movement

- Pan: ±170°
- Tilt: +90° (up) -30° (down)
- 10 camera presets (through remote control)
- Fast and quiet pan & tilt movement

Video format

- YUV, YUY2, MJPEG, NV12
- Network video compress format: H.264
- Network protocol: RTSP, RTMP

Connectivity

- 12V/2A power adapter
- Mini DIN9 for RS232 in & out connection (VISCA control panel and camera daisy-chain)
- USB3.1 Type-B connector
- IP (RJ45)

USB

- 3.1 Gen1 Type B, backward compatible with USB 2.0
- UVC (USB video class) 1.1

Control

- IR remote control
- VISCA/pelco P/pelco D via RS232 (128 preset points via VISCA command)
- Remote side: VISCA over IP, IP (RJ45)
- UVC/UAC plug and play
- WebUI: Browser IP access via Chrome (Does not support Internet Explorer)
- PTZApp2

Mount

- Camera wall-mount bracket included

System requirement

- Windows® 7/10
- Windows® 10 Enterprise (IoT) LTSC (version 1809)
- Mac OS X 10.7 or higher
- Google Chromebook version 29.0.1547.70

Hardware spec

- 3.20 GHz Intel® Core™ i5-4460 processor
- 4 GB RAM or more
- USB 3.1 port , backward compatible with USB2.0 port

Web page browser requirement

- Chrome: Version 76.x or above
- Firefox: Version 69 or above
- IE: Not supported

Power supply

- AC 100V ~ 240V, 50/60Hz
- Consumption: 12V, 2A
- PoE+: 802.3at

Free applications for meeting collaboration (Windows® and MAC)

EZManager : Camera central management software

- Remotely manage group FW/SW updates, camera control, and settings

PTZApp2

- Compatible with Skype™ for business far-end control
- Upgrade firmware automatically or manually
- Control camera
- Set parameters and adjust camera image
- Diagnose operating status
- View live video

EZLive

- Real-time streaming/annotating/ image capture/video recording

Dimensions (D x W x H)

- Package dimensions: 256x256x274 mm
- Camera: 182x142.7x153 mm/1.47 kg
- Remote control: 200x50x21mm/0.09 kg
- Package weight: 3.335 kg/7.351 lbs

Environmental data

- Operation temperature: 0 ~ 40°C
- Operation humidity: 20% ~ 80%
- Storage temperature: -20 ~ 60°C
- Storage humidity: 20% ~ 80%

Package contents

- CAM520 Pro2 unit
- Remote control (SKU: COMVREMOT)
- USB2.0 type-B to type-A cable (16ft/5m)
- Power adapter (10ft/3m) (SKU: CPWRCA540)
- Quick-start guide
- Warranty card
- QR Code Card
- Wall-mount bracket (SKU: COMVCMNT6)
- ¼" tripod screw
- Mini DIN9 to mini DIN8 RS232 adapter (SKU: COMPRO232)

Optional accessories

- MiniDIN8 to D-SUB9 RS232 Cable (SKU: PTDIN8PT1)
- Ceiling Mount (SKU: PTMLTWA01)

Warranty

- Camera: 3 years (US & Canada only)
- Accessories: 1 year

Compatible applications

- ZOOM, Microsoft® Teams, Skype™ for Business, Skype™, Google Hangouts, Intel® Unite™, RingCentral, BlueJeans, V-Cube, LiveOn, CyberLink U Meeting®, TrueConf, Adobe® Connect™, Cisco WebEx®, Fuze, GoToMeeting™, Vidyo, vMix, WebRTC, Wirecast, XSplit



AVer Information Inc. Americas averusa.com
668 Mission Court, Fremont, CA 94539
T 408.263.3828 F 408.263.8132 toll free 1.877.528.7824
©Copyright 2021, AVer Information Inc. All rights reserved.
Specifications subject to change without notice.



Distributor/Dealer