



# EZManager 2

## User Manual



## **COPYRIGHT**

©2020 AVer Information Inc. All rights reserved.

All rights of this object belong to AVer Information Inc. Reproduced or transmitted in any form or by any means without the prior written permission of AVer Information Inc. is prohibited. All information or specifications are subject to change without prior notice.

## **TRADEMARKS**

“AVer” is a trademark owned by AVer Information Inc. Other trademarks used herein for description purpose only belong to each of their companies.

## **DISCLAIMER**

No warranty or representation, either expressed or implied, is made with respect to the contents of this documentation, its quality, performance, merchantability, or fitness for a particular purpose. Information presented in this documentation has been carefully checked for reliability; however, no responsibility is assumed for inaccuracies. The information contained in this documentation is subject to change without notice.

In no event will AVer Information Inc. be liable for direct, indirect, special, incidental, or consequential damages arising out of the use or inability to use this product or documentation, even if advised of the possibility of such damages.

## **Help**

<https://www.aver.com/technical/support>

## **Contact Information**

AVer Information Inc.

<https://www.aver.com>

8F, No.157, Da-An Rd., Tucheng Dist., New Taipei City 23673, Taiwan

Tel: +886 (2) 2269 8535

# Contents

<b>PREFACE.....</b>	<b>1</b>
<b>MINIMUM SYSTEM REQUIREMENT .....</b>	<b>1</b>
<b>DOWNLOADING THE APPLICATION .....</b>	<b>2</b>
<b>CONNECTION .....</b>	<b>2</b>
<b>Install PTZApp 2 (Client Site) .....</b>	<b>3</b>
<b>Install EZManager 2 (Server Site) .....</b>	<b>3</b>
<b>CONNECTING TO CAMERA.....</b>	<b>4</b>
<b>USING EZMANAGER 2.....</b>	<b>5</b>
<b>Start.....</b>	<b>5</b>
<b>Main Functions Introduction .....</b>	<b>6</b>
<b>Scan Camera – USB Devices .....</b>	<b>6</b>
<b>Scan Camera – IP Device.....</b>	<b>10</b>
<b>Add Camera - USB Devices .....</b>	<b>13</b>
<b>Add Camera - IP Device .....</b>	<b>17</b>
<b>Move Camera .....</b>	<b>20</b>
<b>Delete Camera - USB Devices.....</b>	<b>26</b>
<b>Delete Camera - IP Device .....</b>	<b>27</b>
<b>Update - PTZApp 2.....</b>	<b>29</b>
<b>Update - Firmware .....</b>	<b>31</b>
<b>Export Profile.....</b>	<b>32</b>
<b>Import Profile.....</b>	<b>34</b>
<b>View Camera Status .....</b>	<b>36</b>
<b>Operate the Camera .....</b>	<b>39</b>
<b>Forget Password.....</b>	<b>43</b>
<b>Select System Language.....</b>	<b>43</b>
<b>Usage Data .....</b>	<b>44</b>

**PTZApp Pair ..... 45**

**Logout the EZManager 2 ..... 47**

**Stop EZManager 2..... 47**



# PREFACE

---

EZManager 2 is a management software to control all AVer USB cameras through the network and PTZApp 2. This allows user to monitor and setup USB cameras anywhere as long as network is available.

## MINIMUM SYSTEM REQUIREMENT

---

### **PC hardware and software requirement:**

- CPU: Intel® Core™ i5-7xxx 3.2GHZ
- RAM: 8G
- HDD: 10G (Free Space)
- Network card: 100M bps
- Wireless: 802.11ac (Optional)
- OS: Windows® 7, 10 (64 bits)

### **Web browser supports:**

- Chrome: version 76.x or above
- IE: Does not support

# DOWNLOADING THE APPLICATION

Through the network and PTZApp 2, EZManager 2 can find and manage the AVer USB cameras. Therefore, user needs to install the EZManager 2 at server site and PTZApp 2 at client (PC/laptop) site.

To get this software, please visit our download center (see below URL) to download. URL: <https://www.aver.com/download-center>



EZManager 2



PTZApp 2

## CONNECTION

- Please make sure all devices are well-connected and power on.
- The client site needs to install “**PTZApp 2**” application. EZManager 2 does not support PTZApp.
- The server site needs to install “**EZManager 2**” application.
- The server site and client site must be at the same LAN segment if it is an internet connection (same location).
- The server site IP needs a public IP address, if client site and server site are not an internal connection (different location).




# INSTALLATION

---

## Install PTZApp 2 (Client Site)

**[Note]** PTZApp 2 works with EZManager 2 but not EZManager.

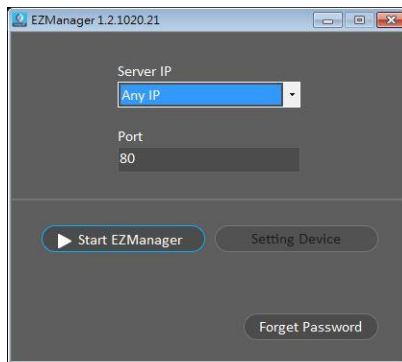
1. After downloading, double-click  to start installation. Follow the on-screen instructions to complete the installation.
2. To make a connection with EZManager 2, refer to “[CONNECTING TO CAMERA](#)” section.

## Install EZManager 2 (Server Site)

1. After downloading, double-click  to start installation. Follow the on-screen instructions to complete the installation.

**[Note]** During the installation, a firewall security dialog will show up, please allow the firewall access to continue installation.

2. After installation, an EZManager 2 dialog is displayed.



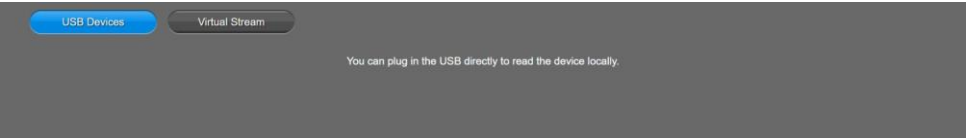
3. To make a connection with EZManager 2, refer to “[CONNECTING TO CAMERA](#)” section.
4. Refer to “[USING EZMANAGER 2](#)” section to operate the EZManager 2.

# CONNECTING TO CAMERA

The client site can make a connection to EZManager 2 via EZManager 2’s “Scan” function, then the client camera will be in EZManager 2’s list.

## For USB Camera

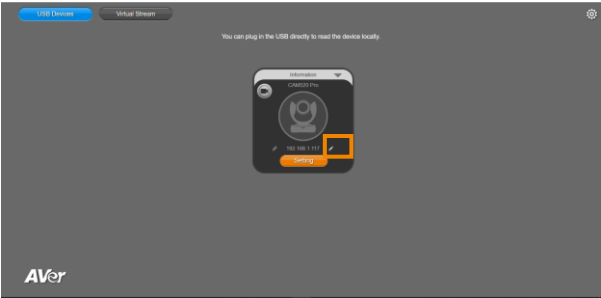
Run the PTZApp 2. PTZApp 2 will open in Chrome browser automatically.



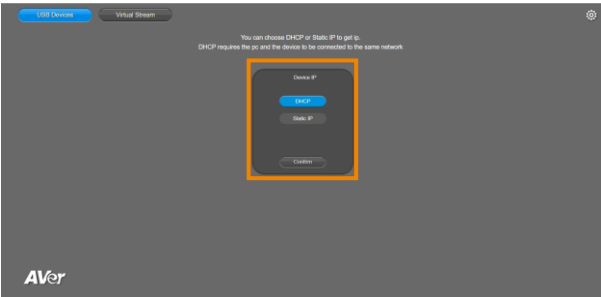
## For IP Camera

Configure the IP address of the camera so it has the same LAN network with EZManager 2 server.

1. In PTZApp 2 dialog, click the pencil icon.



2. Choose DHCP or Static IP to get IP address.

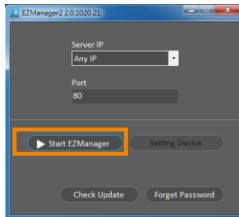




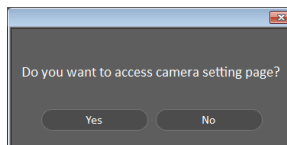
# USING EZMANAGER 2

## Start

1. In EZManager 2 dialog, click “**Start EZManager**”.



2. A dialog pops up and asks if you want to access camera setting page or just enable EZManager 2.



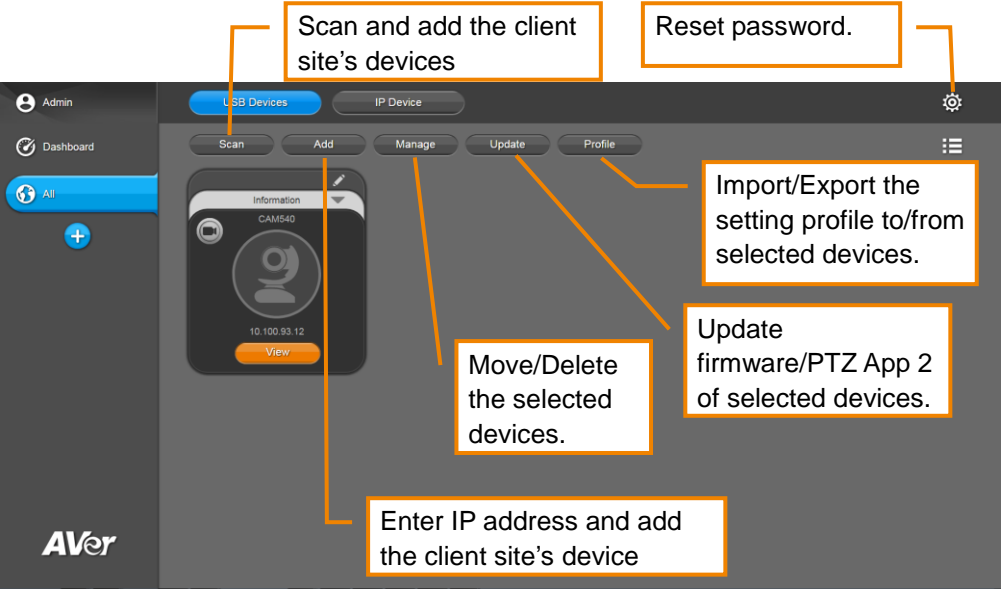
- **No:** The EZManager 2 will be enabled and allow remote device to access EZManager 2 to do cameras' management.
  - **Yes:** The screen will lead to a camera setting page.
3. When you select “**Yes**”, a login page will show up. Please enter the password to login. The default password is “**1234**”.

**[Note]** Guest can only review but not configure the setting.



4. Then, click “**Login**”.

# Main Functions Introduction

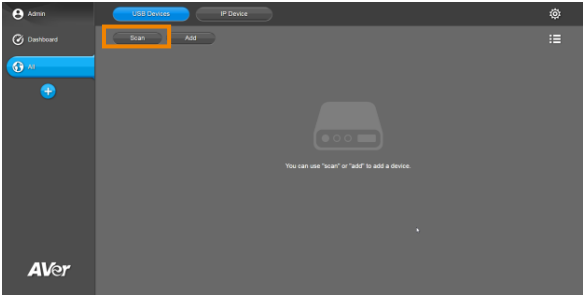


## Scan Camera – USB Devices

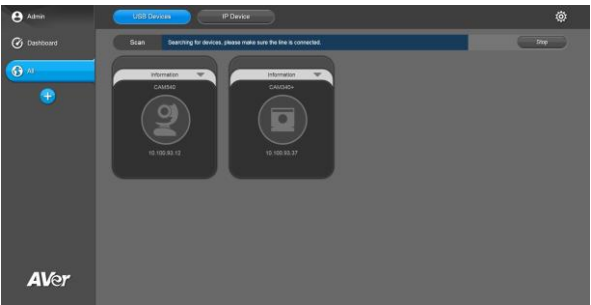
To find the USB camera and add.

**[Note]** The scan function only supports for USB cameras of EZManager 2 server site and client site at the same LAN network.

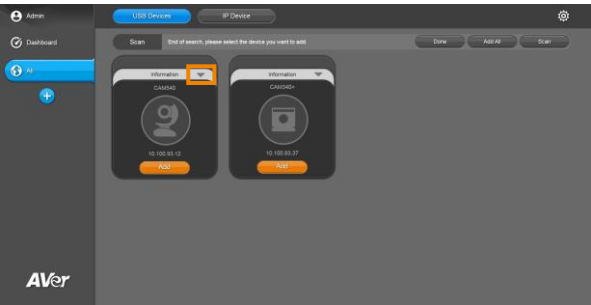
1. Click Scan button to search all the USB cameras connected to the client site (PC/Laptop).



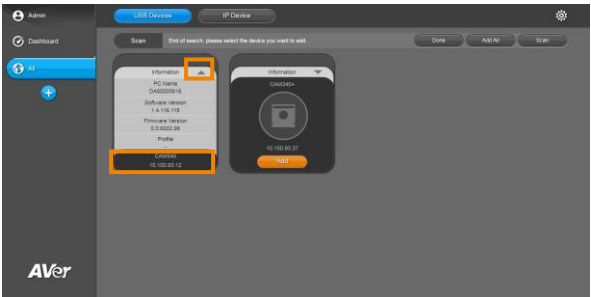
2. The cameras will appear in dialog.



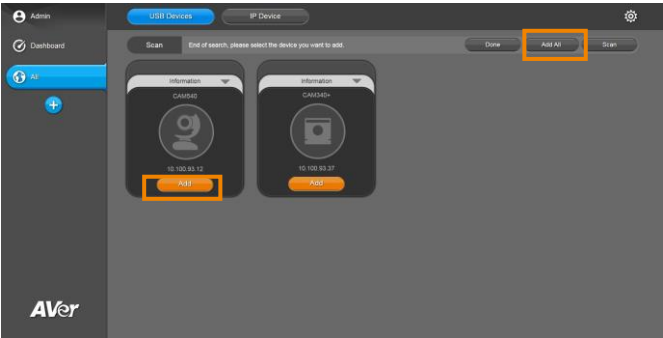
3. To review the information of camera, click the drop-down triangle.



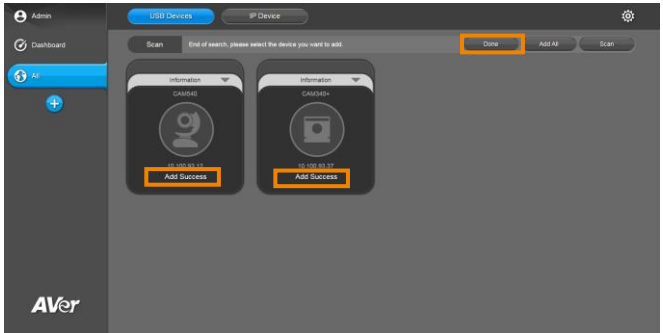
To minimize the information, click the triangle or the bottom area of the information icon.



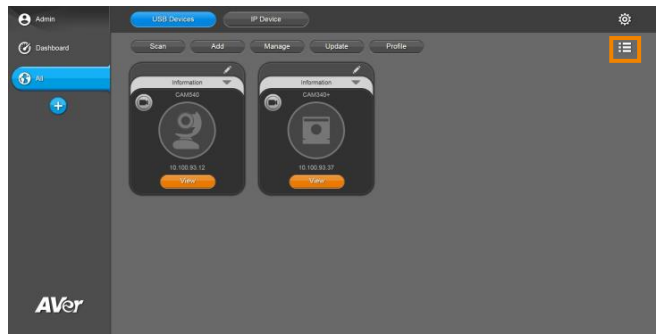
4. Click **Add** to add one camera or click **Add All** to add all the cameras. The following setup instructions demonstrate adding two cameras.

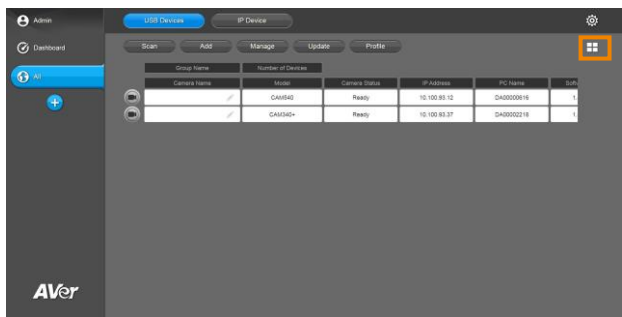


5. “Add Success” message will appear. Click **Done** to finish scanning.

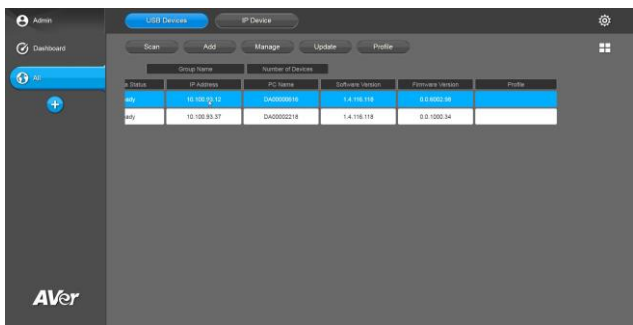
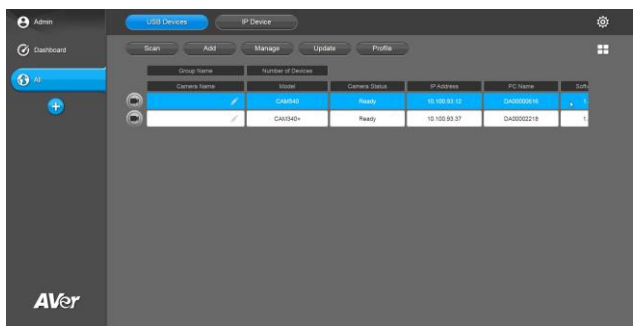


6. Then, the cameras will be listed on the screen. Click the icon to switch display mode.





7. To view the rest of information, move the cursor to any row of the cameras until it highlights in blue and hold and drag the cursor to the left.

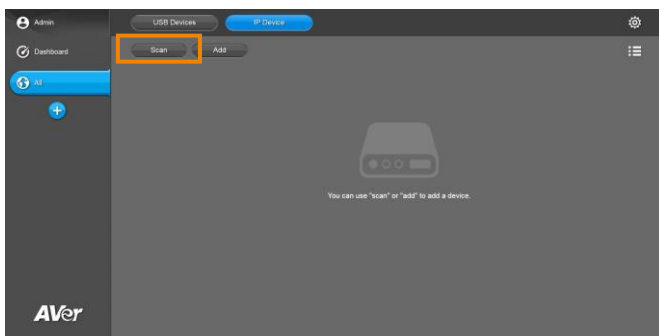


## Scan Camera – IP Device

To find the IP camera and add.

**[Note]** The scan function only supports for IP cameras and EZManager 2 server site at the same LAN network.

1. Click **Scan** button to search all the IP cameras connected to the server site.



2. The cameras will appear in dialog.



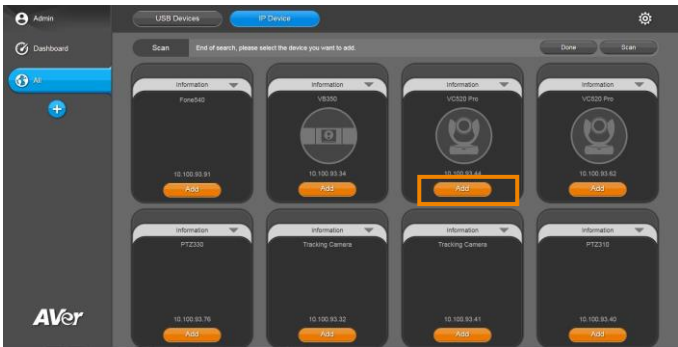
3. To review the information of camera, click the drop-down triangle.



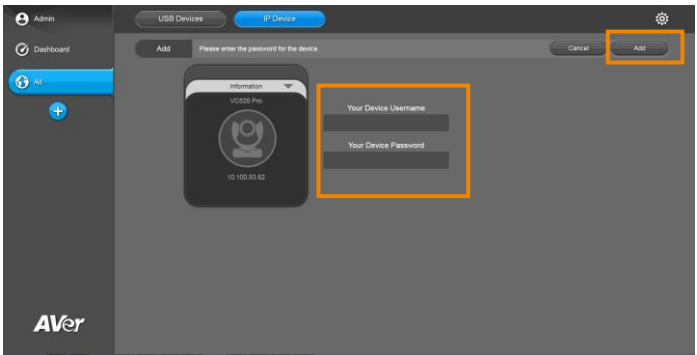
To minimize the information, click the triangle or bottom area of the information icon.



4. Click **Add** button to add the camera. IP cameras can only be added one at a time via scan function.



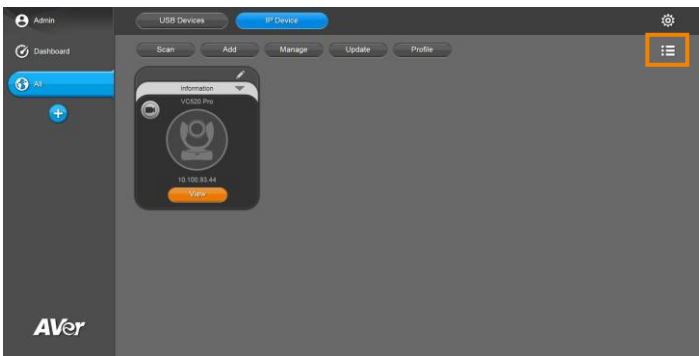
5. Enter the Device Username and Password and click **Add**.



6. “Add Success” message will appear. Click **Done** to finish scanning.

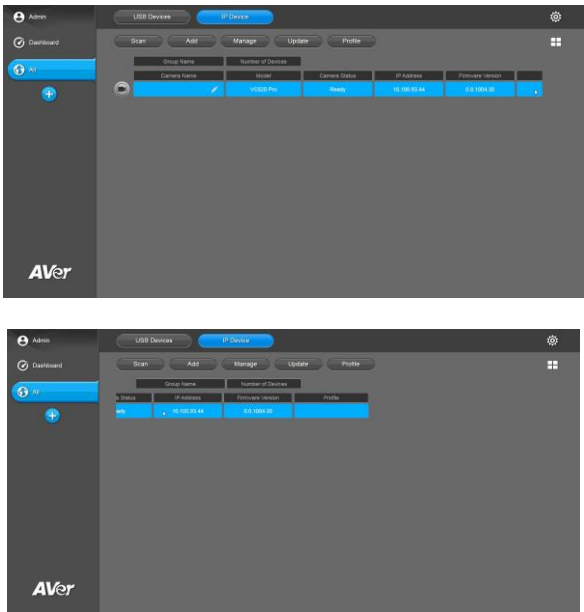


7. Then, the camera will be listed on the screen. Click the icon to switch to mode.





8. To view the rest of information, move the cursor to that camera until it highlights in blue and hold and drag the cursor to the left.

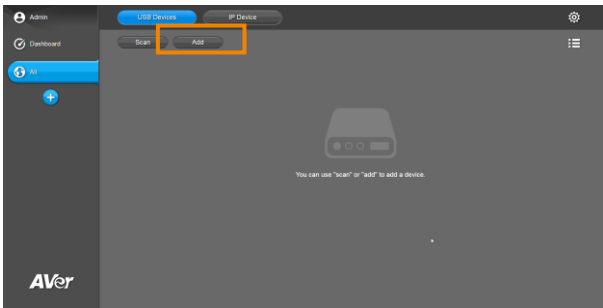


## Add Camera - USB Devices

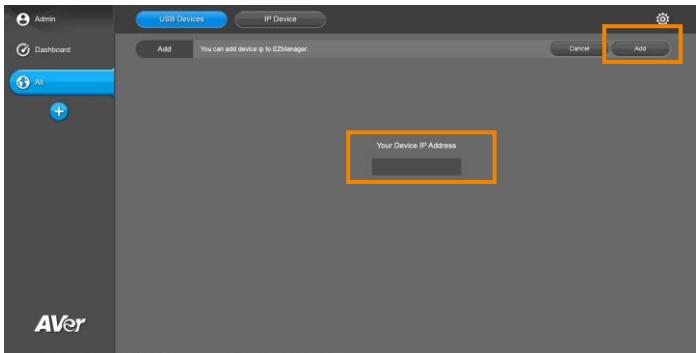
To enter the IP address of USB camera and add.

**[Note]** The add function only supports for USB cameras of EZManager 2 server site and client site at the same LAN network.

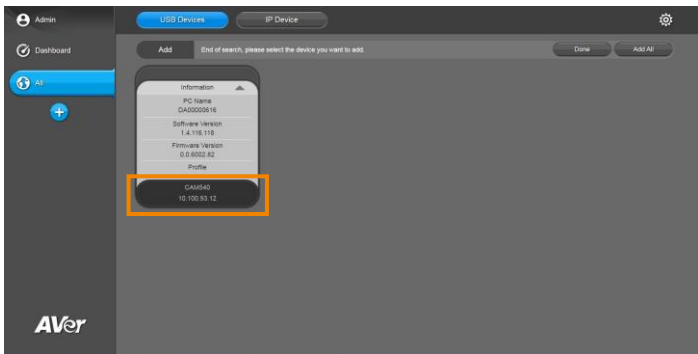
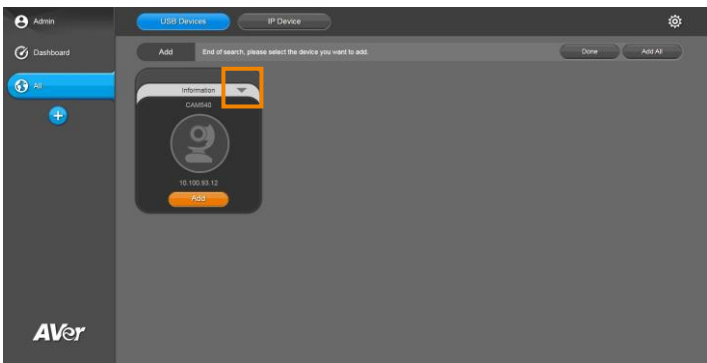
1. Click **Add** button.



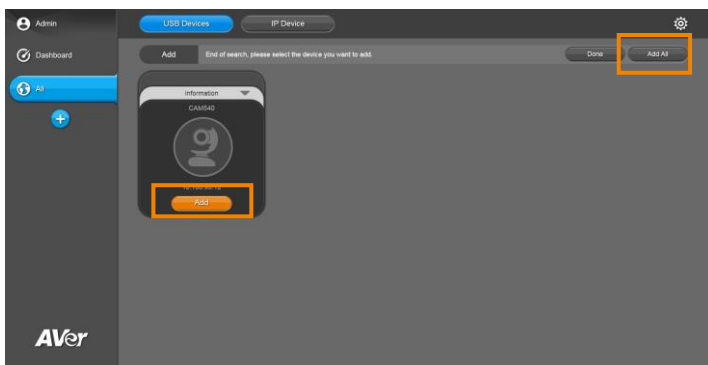
2. Enter your device IP address and click **Add** to search. Repeat this step if necessary.



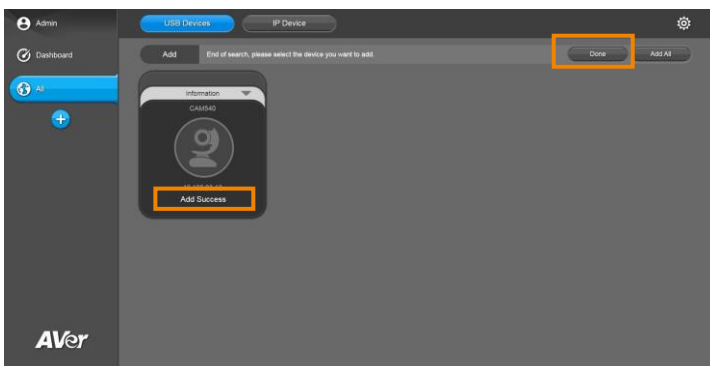
3. To review the information of camera, click the drop-down triangle. To minimize the information, click the bottom area of the information icon.



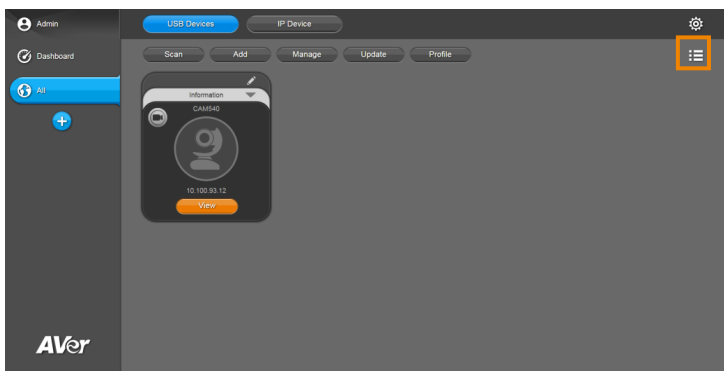
- Click **Add** or **Add All** button to add the camera(s) to be managed via EZManager 2 and PTZApp 2.

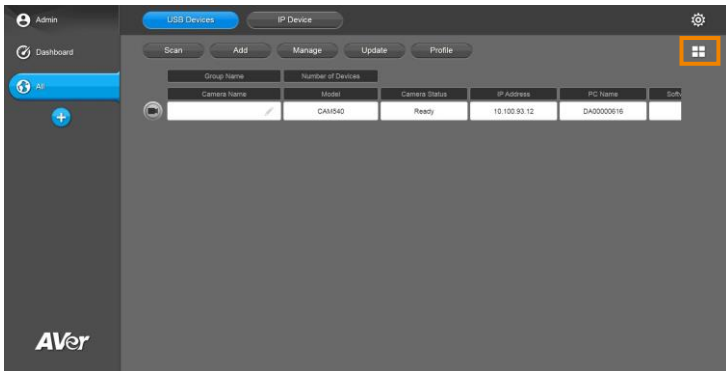


- "Add Success" message will appear. Click **Done** to finish adding.

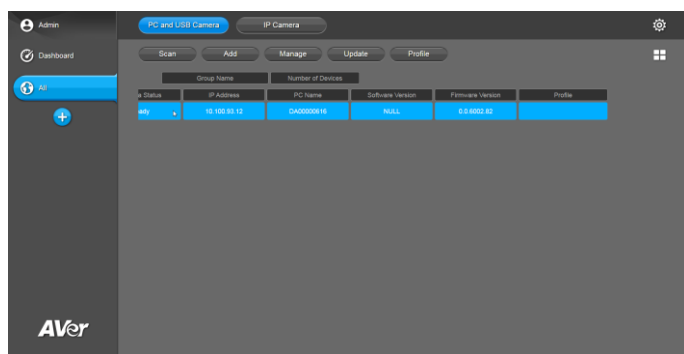
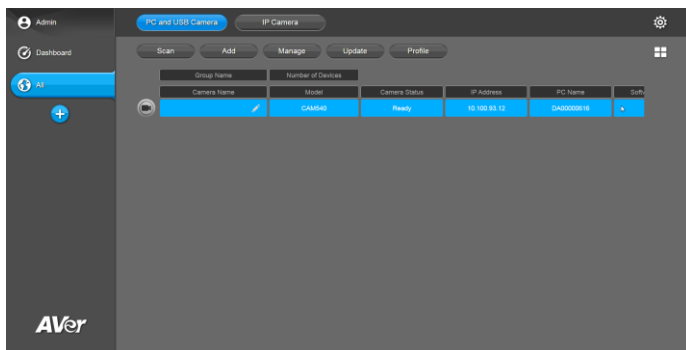


- Then, the camera will be listed on the screen. Click the icon to switch to mode.





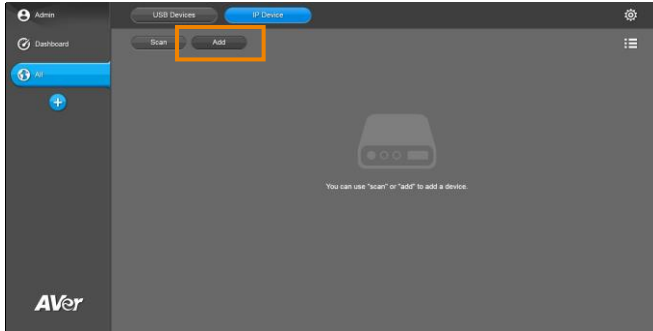
7. To view the rest of information, move the cursor to that camera until it highlights in blue and hold and drag the cursor to the left.



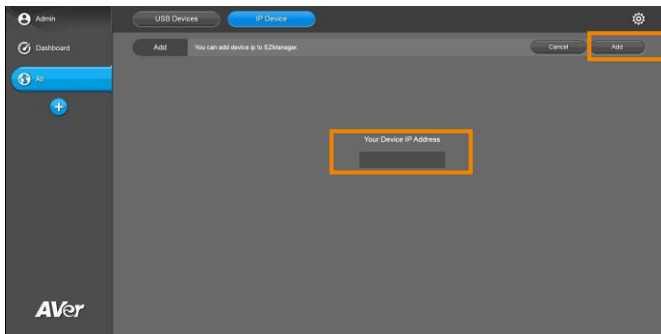
## Add Camera - IP Device

To enter the IP address of IP camera and add.

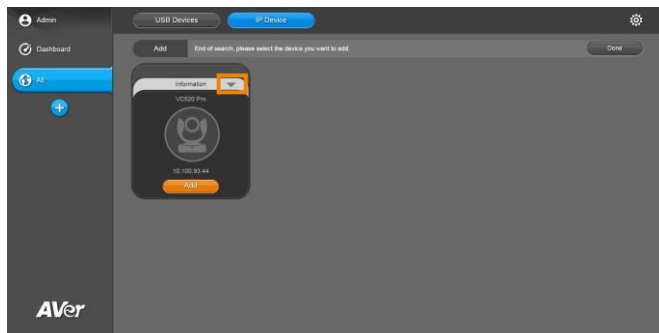
1. Click **Add** button.



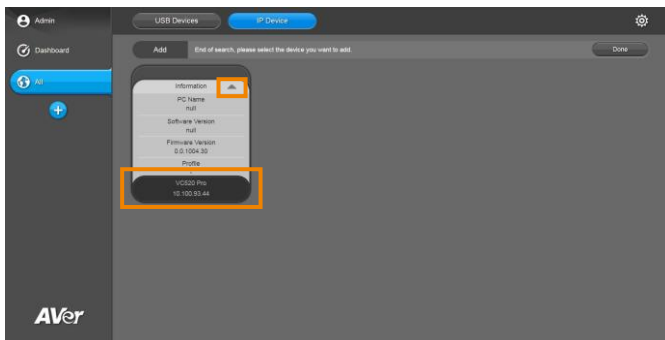
2. Enter your device IP address and click **Add** to search.



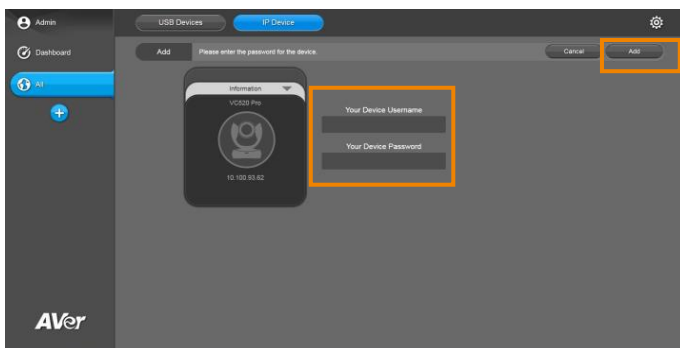
3. To review the information of camera, click the drop-down triangle.



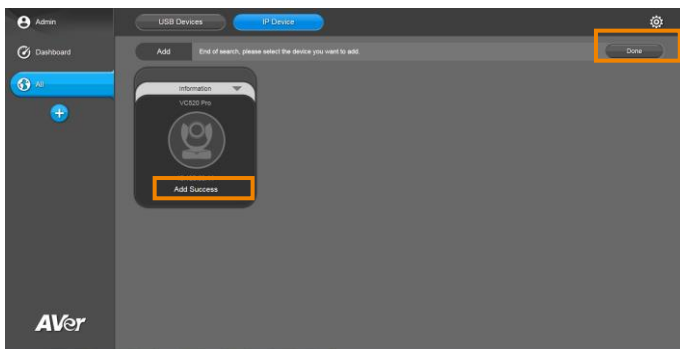
To minimize the information, click the triangle or the bottom area of the information icon.



4. Enter the Device Username and Password and click **Add**.



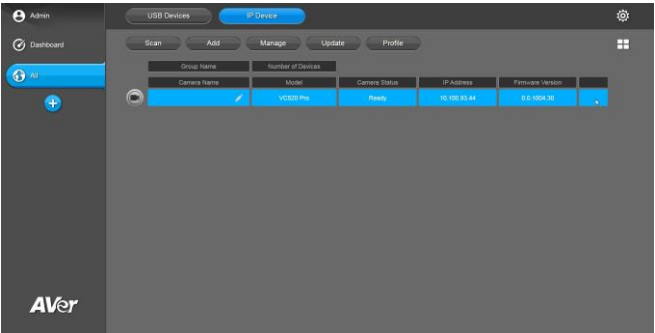
5. "Add Success" message will appear. Click **Done** to finish adding.

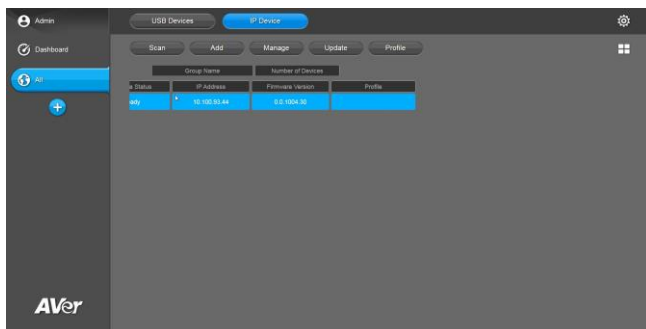


6. Then, the camera will be listed on the screen. Click the icon to switch to mode.



7. To view the rest of information, move the cursor to that camera until it highlights in blue and hold and drag the cursor to the left.

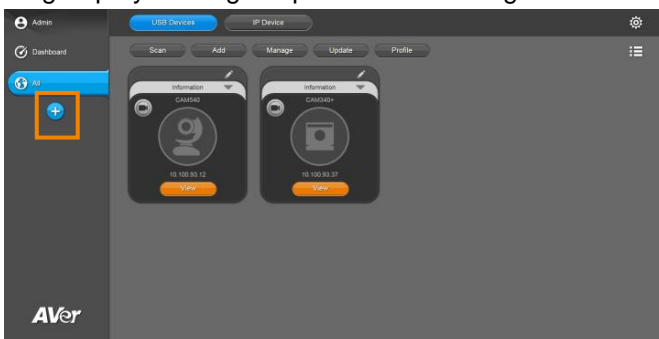




## Move Camera

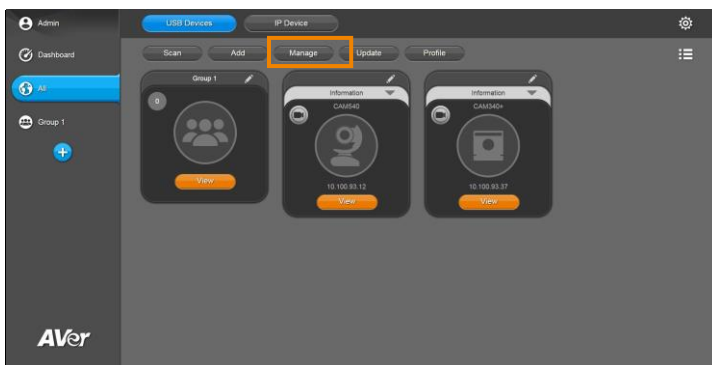
To create a group and assign the camera to it. The following steps demonstrate how to move CAM540 and CAM340+ to Group 1.

1. Click the add button to create a group. The default name is Group 1. User can rename the group by clicking the pencil and entering the new name.





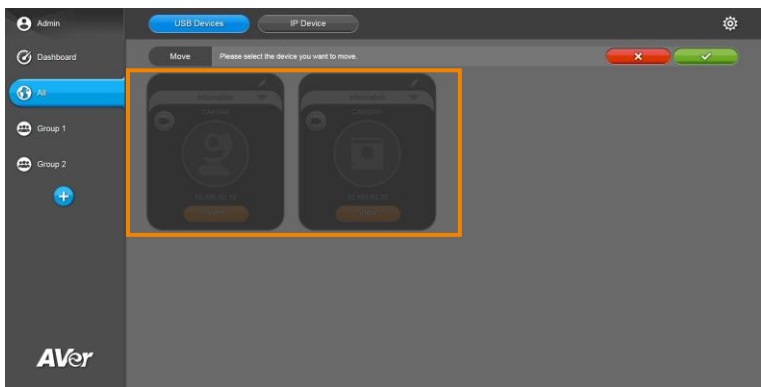
2. Click **Manage** button.

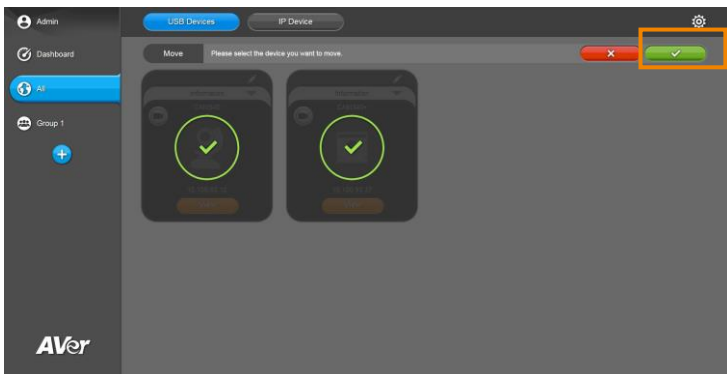


3. Click **Move** button.

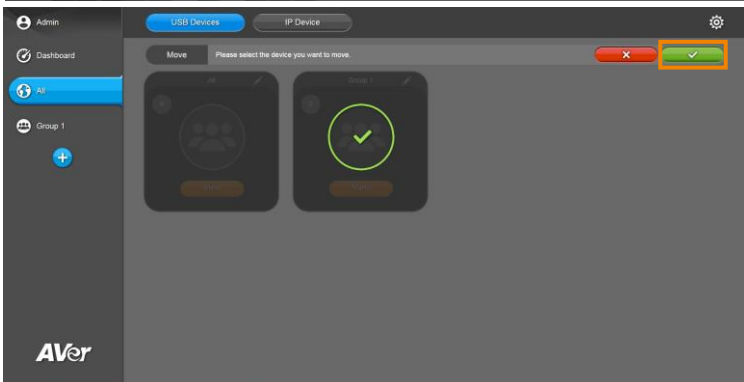
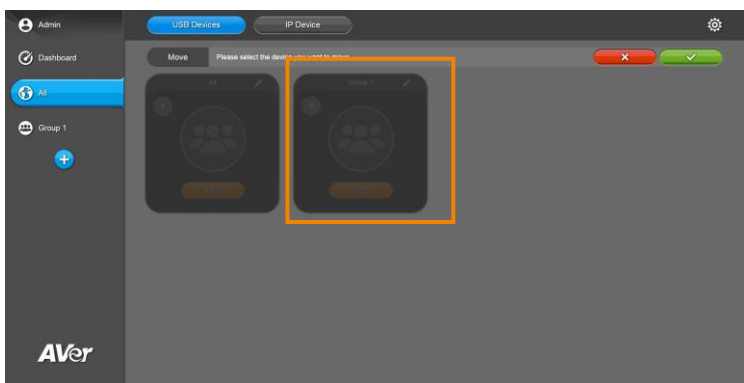


4. Click the camera to be moved then click the check button.

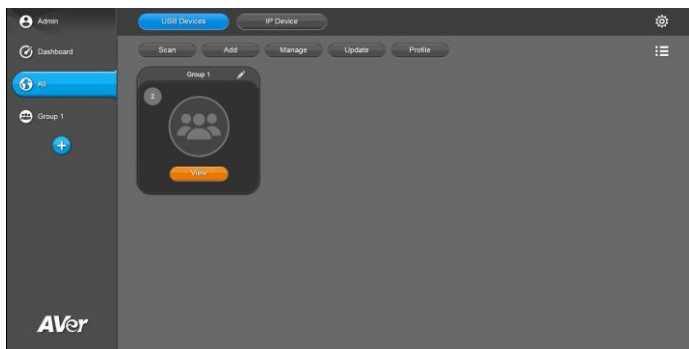




5. Click the group the camera will be assigned to and click the check button.

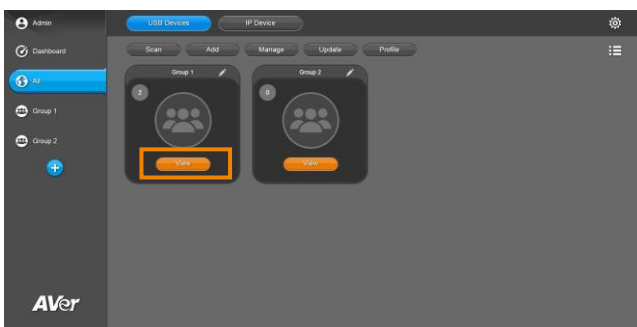
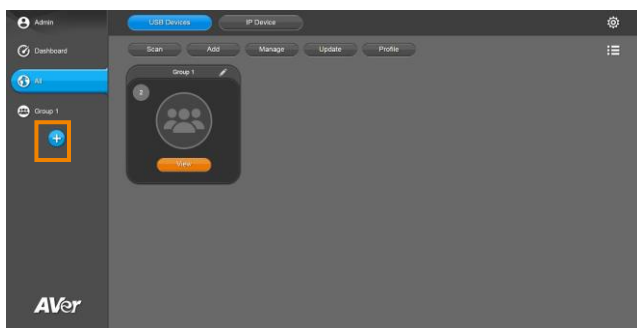


6. Repeat above steps until all the cameras belong to desired groups.

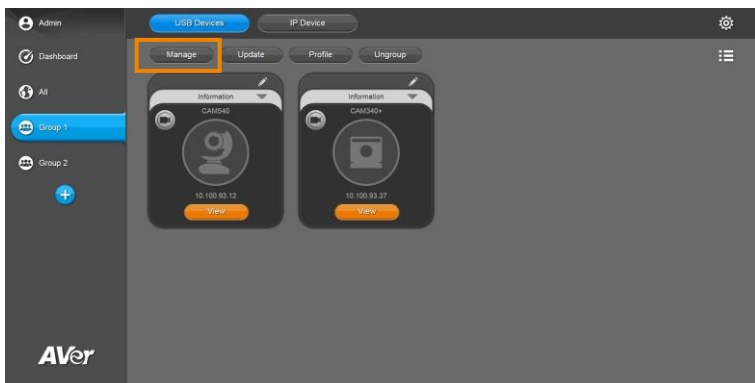


Cameras can be moved from one group to another. The following steps demonstrate how to move CAM540 from Group 1 to Group 2.

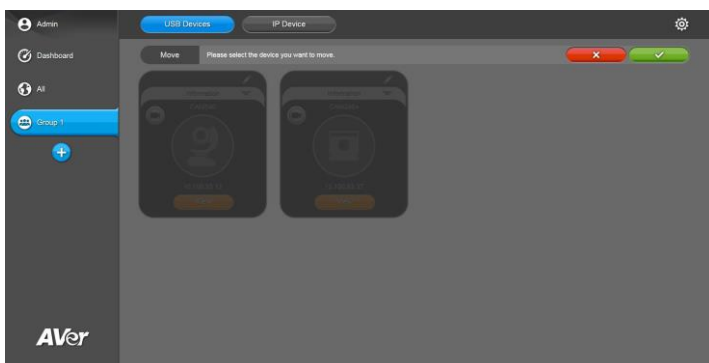
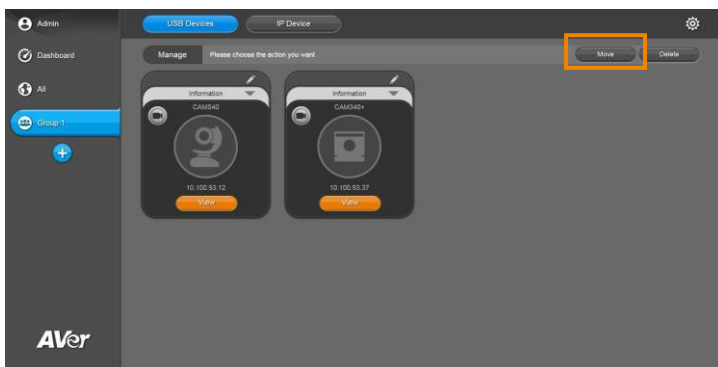
1. Click the add button to create Group 2. Click **View** button of Group 1.



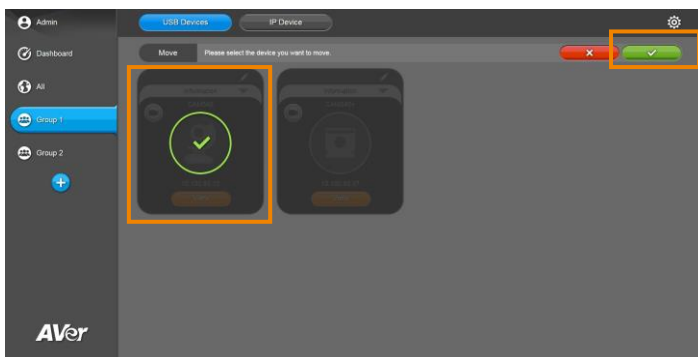
2. Click **Manage** button.



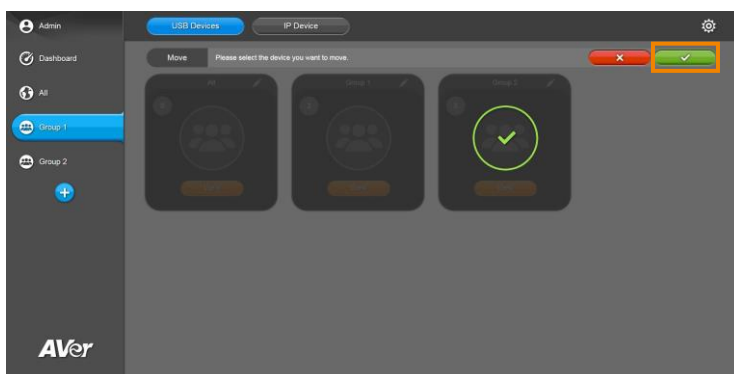
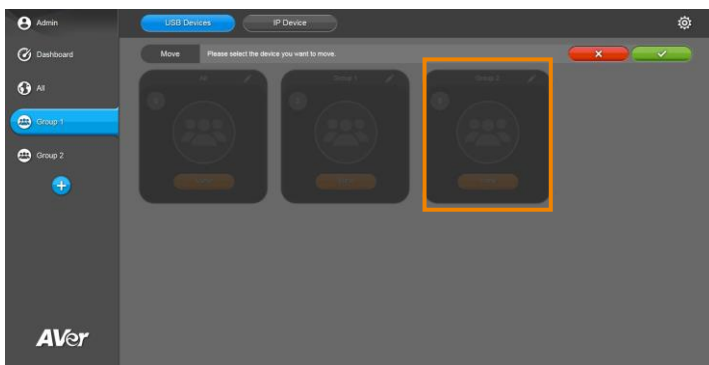
3. Click **Move** button.



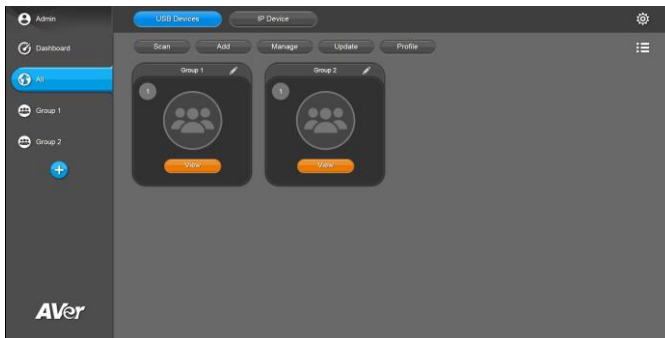
- Click the camera to be moved and the check button.



- Click the group the camera will be assigned to and click the check button.



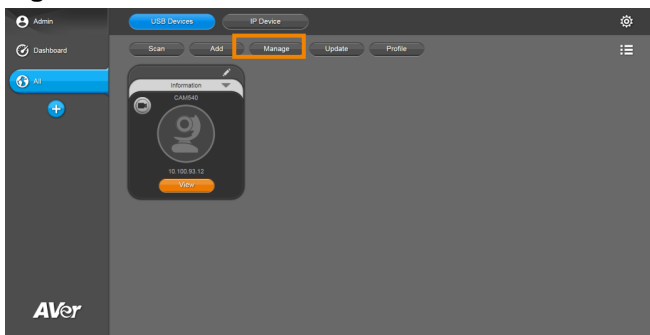
6. Now Group 2 contains one camera.



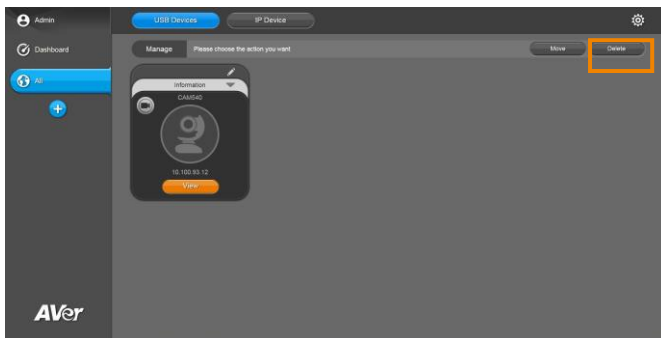
## Delete Camera - USB Devices

To remove the selected cameras from the list.

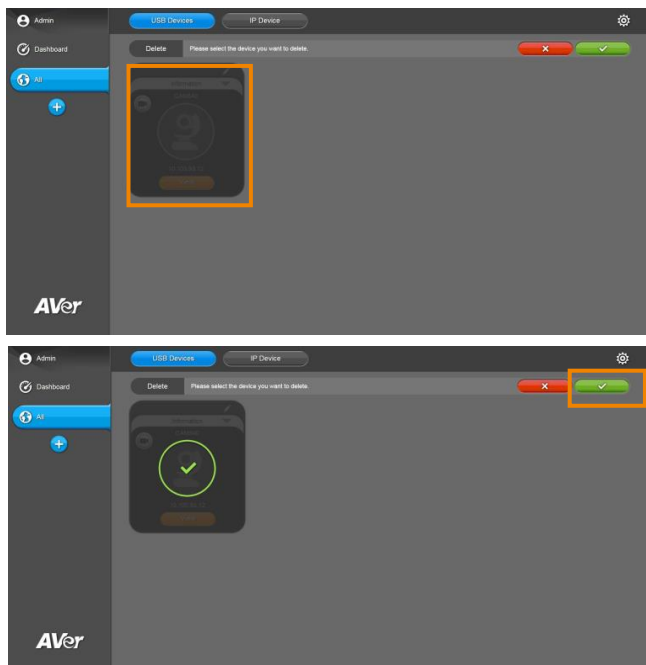
1. Click **Manage** button.



2. Click **Delete** to delete the camera.



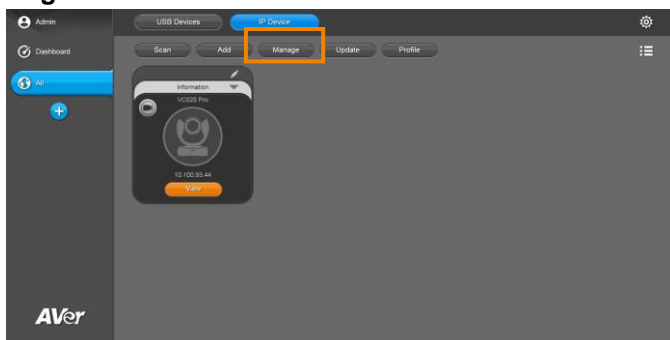
3. Click the camera to be deleted then the check button.



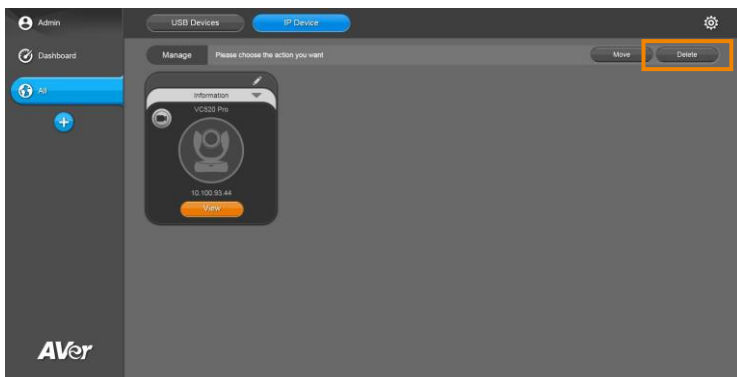
## Delete Camera - IP Device

To remove the selected cameras from the list.

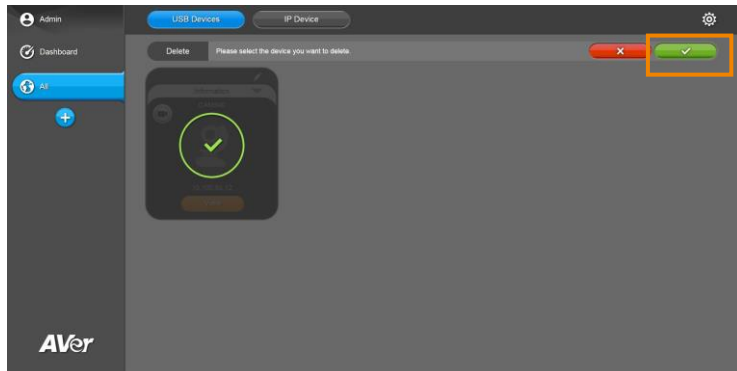
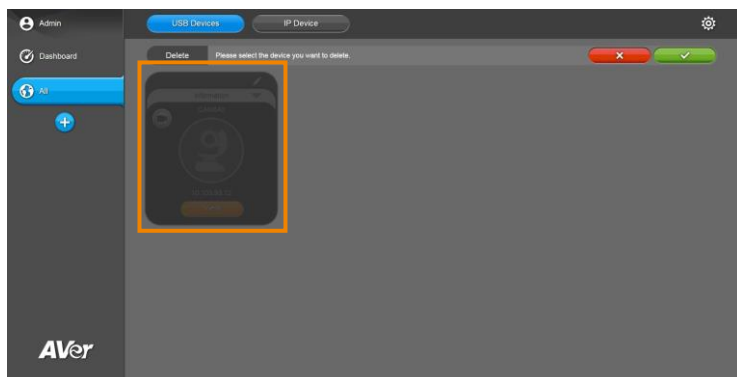
1. Click **Manage** button.



2. Click **Delete** to delete the camera.



3. Click the camera to be deleted then the check button.



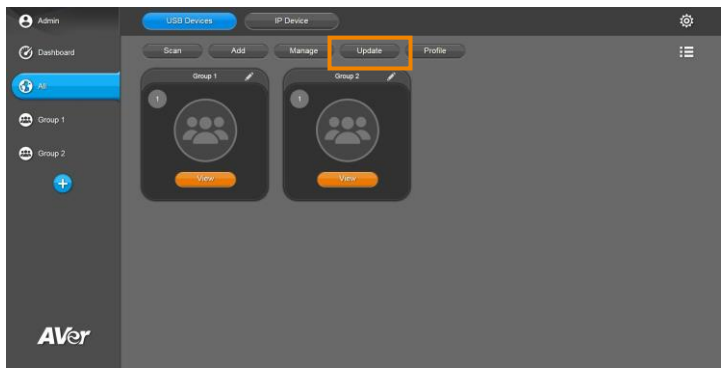


# Update - PTZApp 2

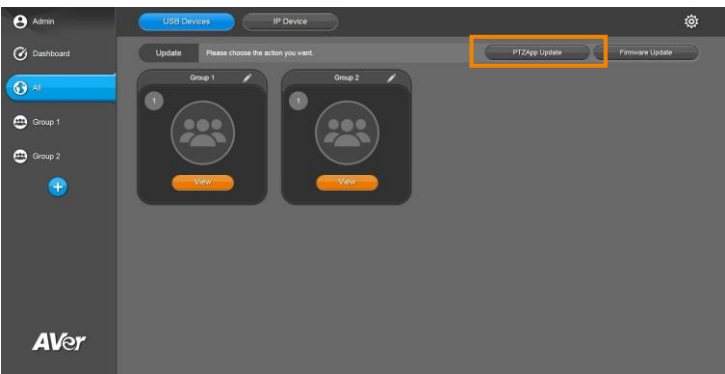
To update the latest version of PTZApp 2.

**[Note]** While the camera is operating, the PTZApp 2 update is not allowed. Please make sure the camera is idling before update.

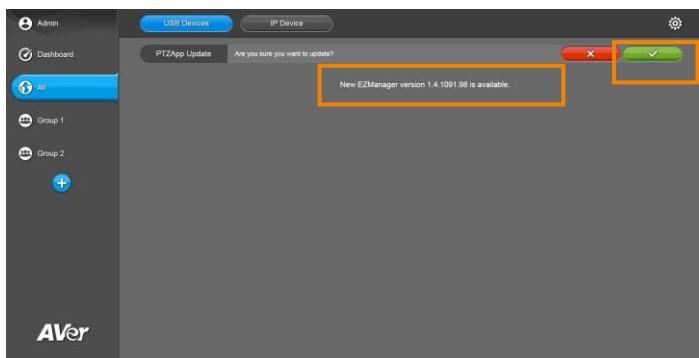
- 1. Click **Update** button.



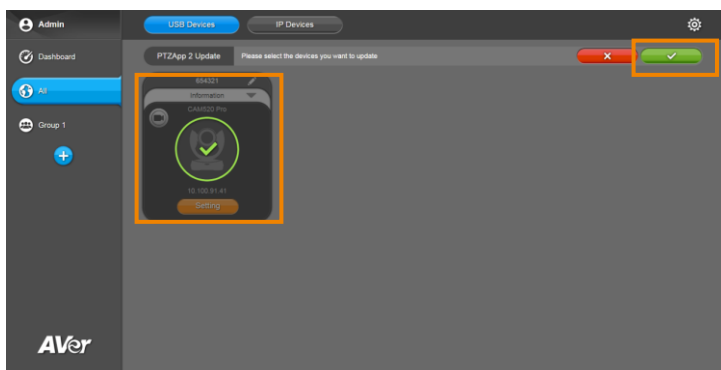
- 2. Click **PTZApp 2 Update**.



3. The latest version of PTZApp 2 appears in dialog. Click the check button to confirm to update.



4. Select the cameras to update PTZApp 2 version and click the check button.



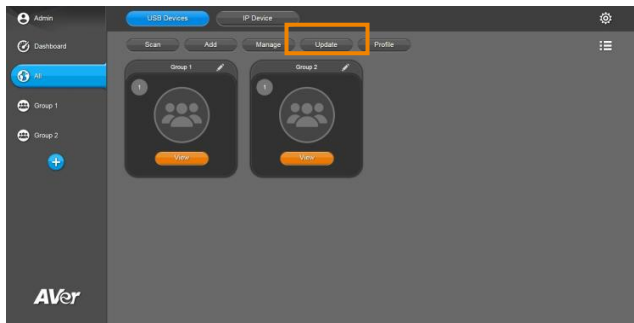
**[Note]** After updating, the camera will reboot. The EZManager 2 will lose connection with the camera. Please wait for EZManager 2 to reconnect to the camera.

# Update - Firmware

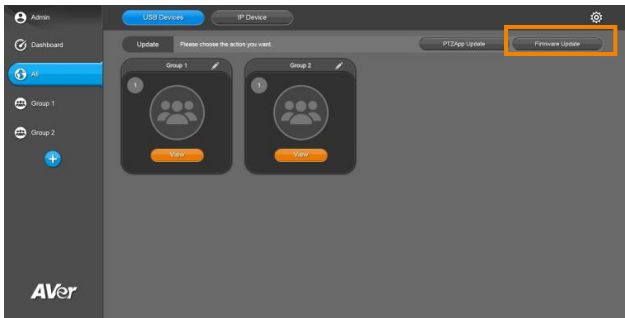
To update the latest firmware of selected cameras.

**[Notes]** While the camera is operating, the firmware update is not allowed. Please make sure the camera is idling before update.

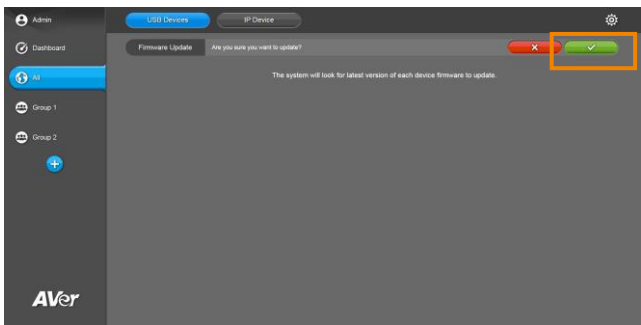
- 1. Click **Update**.



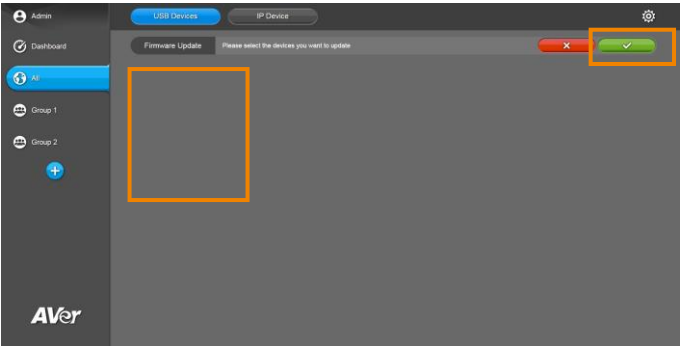
- 2. Click **Firmware Update**.



- 3. Click the check button to confirm to update.



4. Select the cameras to update firmware and click the check button.



**[Note]** After updating, the camera will reboot. The EZManager 2 will lose connection with the camera. Please wait for EZManager 2 to reconnect to the camera.

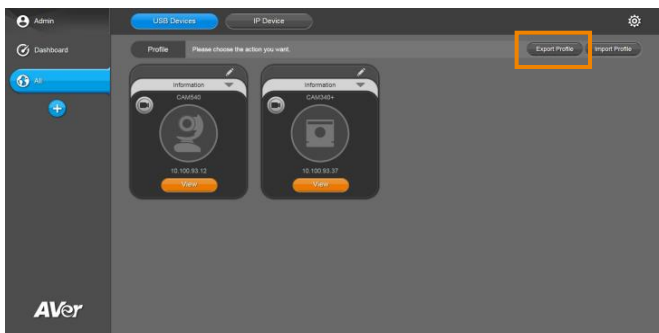
## Export Profile

The steps to export the setting profile of a USB camera are the same as the IP camera. The following steps demonstrate how to export the profile of a USB camera.

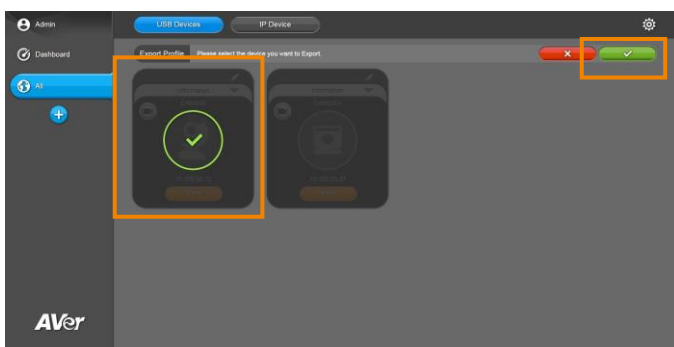
1. Click **Profile** button.



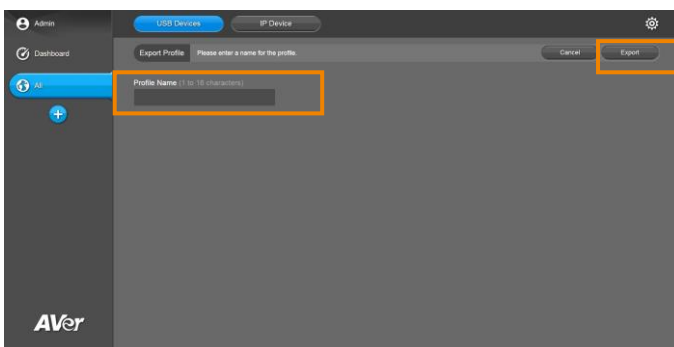
2. Click **Export Profile** to export the profile of camera.



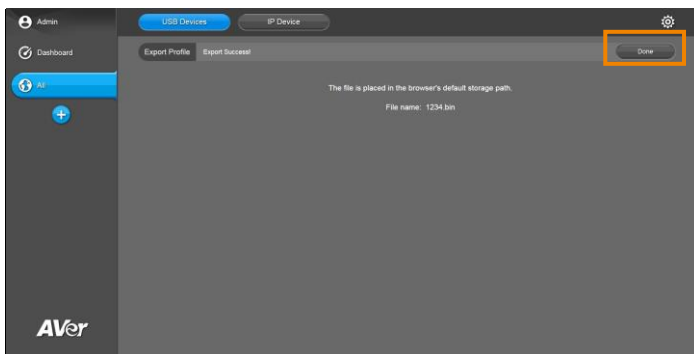
3. Click the camera to be exported then the check button.



4. Enter the profile name and click **Export**.



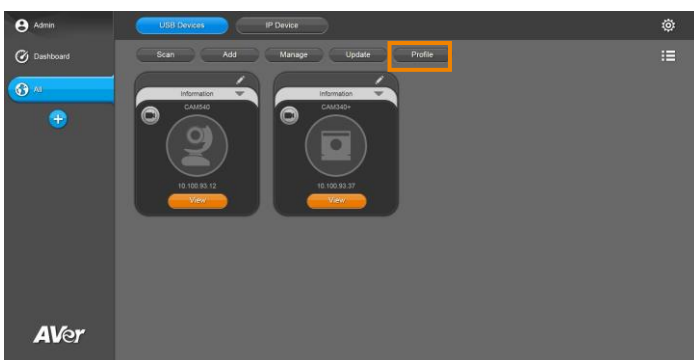
5. The export file is placed in the browser's default storage path. Click **Done** to finish exporting.



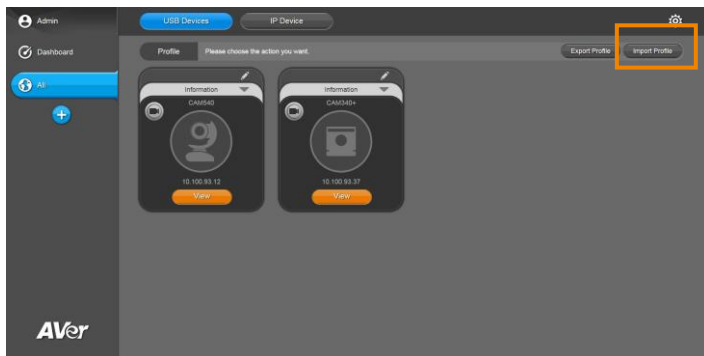
## Import Profile

To import the setting profile to selected camera from local hard disk/external storage device. The steps of importing the profile to a USB camera is the same as to the IP camera. The following steps demonstrate how to import the profile of a USB camera.

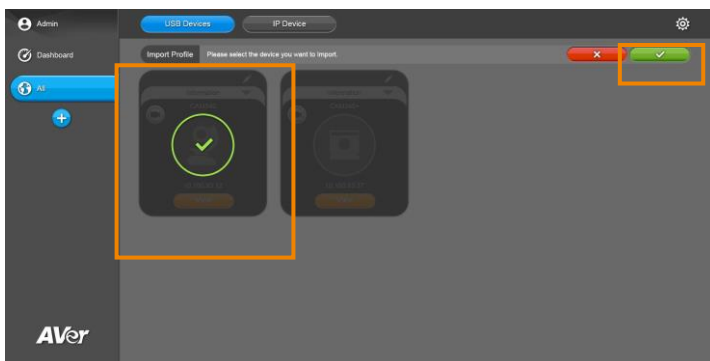
1. Click **Profile** button.



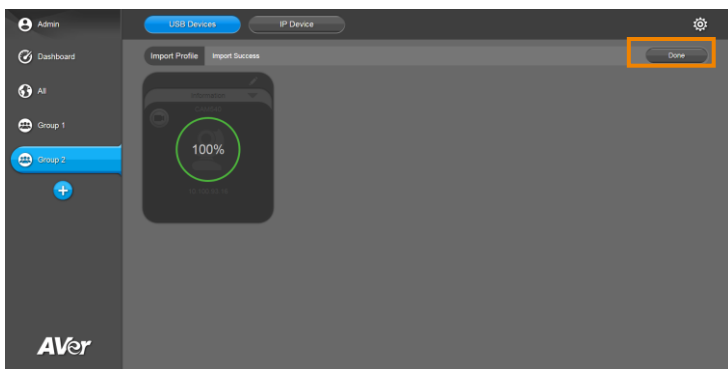
2. Click **Import Profile** to import the profile of camera.



3. Click the camera to be imported then click the check button.



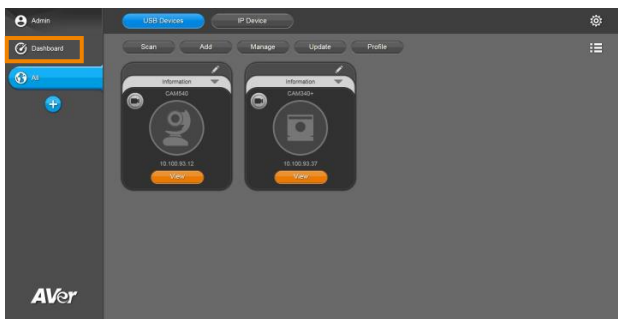
4. Select the import path.
5. The import succeeds. Click **Done** to finish importing.



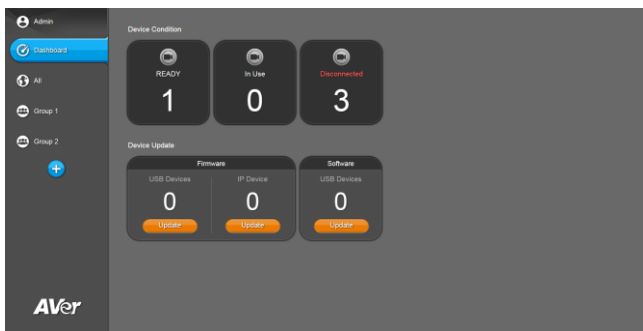
## View Camera Status

To view all the cameras' status.

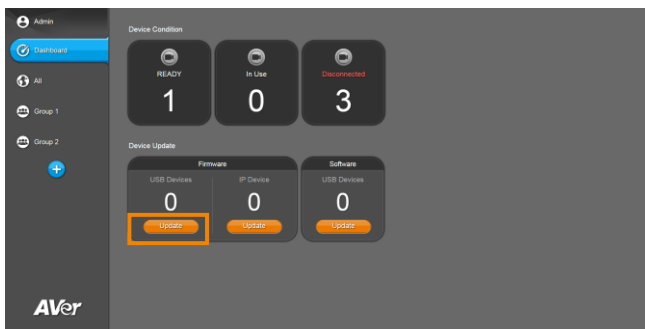
1. Click **Dashboard** button.



2. Device Condition shows the number of cameras are ready, in use and disconnected. Device Update shows the number of available firmware/software (PTZ App2) update.

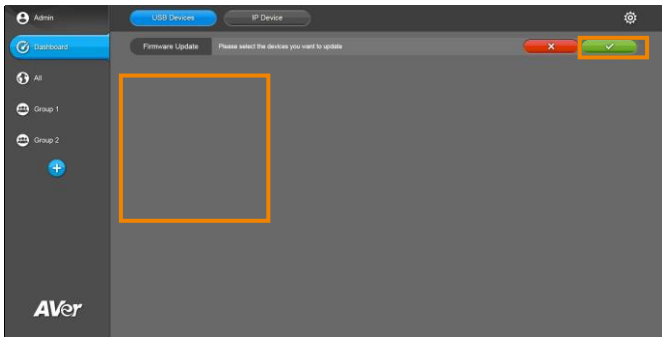


3. To update the USB Devices, click **Update**.

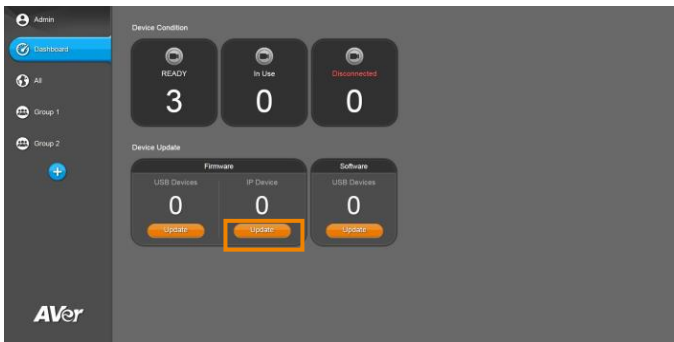




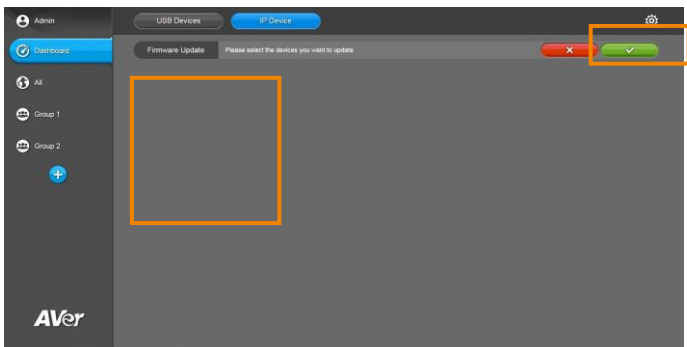
4. Select the devices to update. Follow the steps in [Update – Firmware](#) section to finish the update.



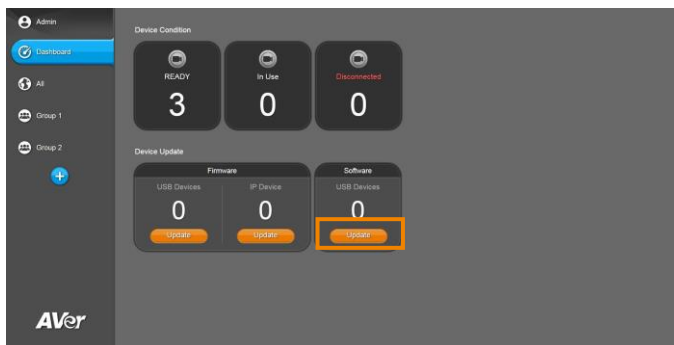
5. To update the IP Device, click **Update**.



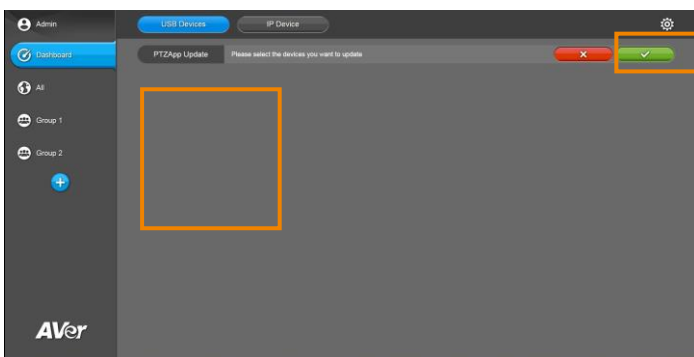
6. Select the devices to update. Follow the steps in [Update – Firmware](#) section to finish the update.



To update the software (PTZApp 2), click **Update**.



7. Select the devices to update. Follow the steps in [Update – PTZApp 2](#) section to finish the update.

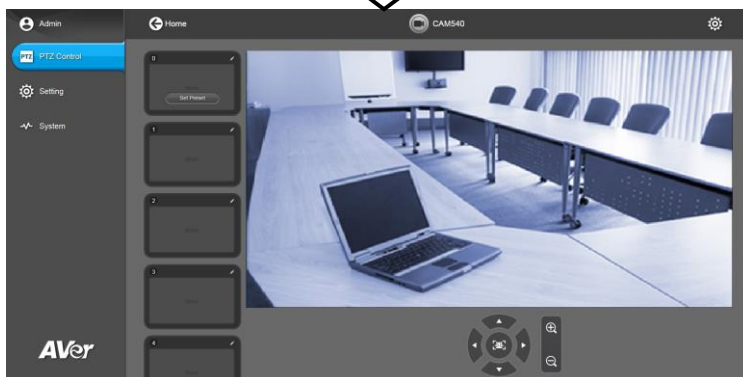
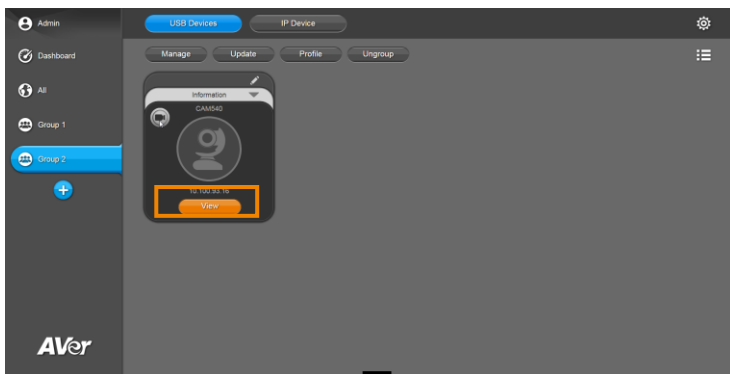


## Operate the Camera

User can operate the camera through the EZManager 2.

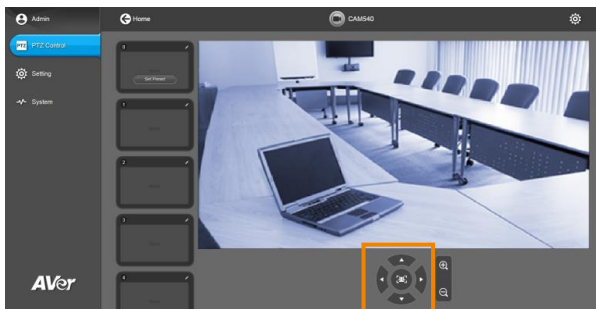
**[Note]** User cannot setup the camera when the camera is busy with Zoom, Skype, etc.

Click **View** button to go to the setting page.



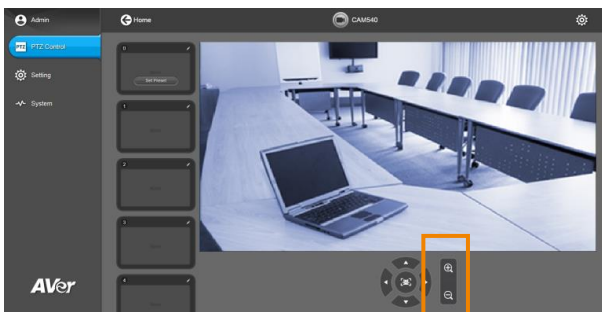
## Direction Button

Use the direction button to control the camera to left, right, up and down.



## Zoom in/Zoom out

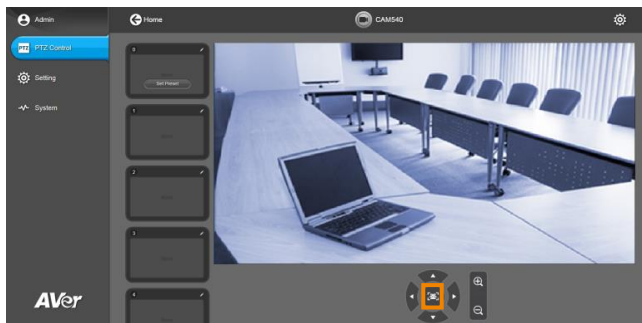
Press the buttons to zoom in or zoom out the view of the camera.



## SmartFrame

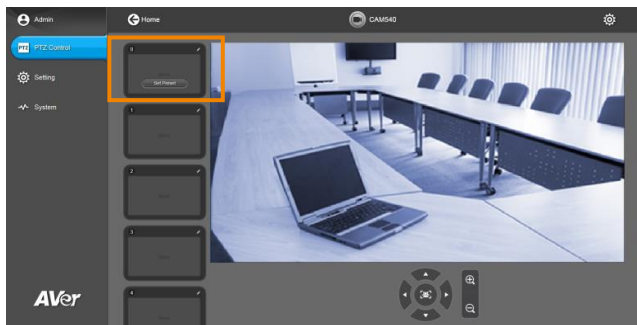
One-click automatic FOV adjustment to fit all participants. Press the button to switch the SmartFrame function between auto and manual.

**[Note]** While in conferencing meeting, participants must face the camera for face detection. Side face is not detectable.



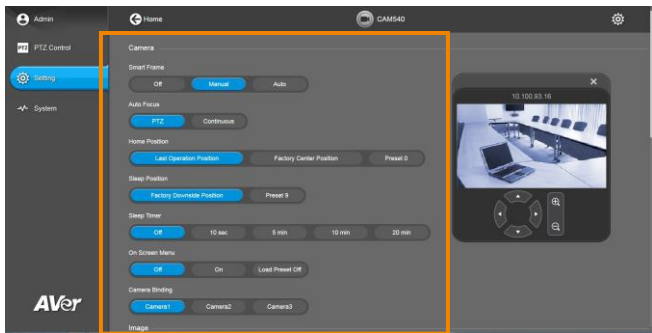
## Preset Point

To setup preset position, choose a number, adjust the camera to your desired position and click **Set Preset** button. To view preset point, click the number again.



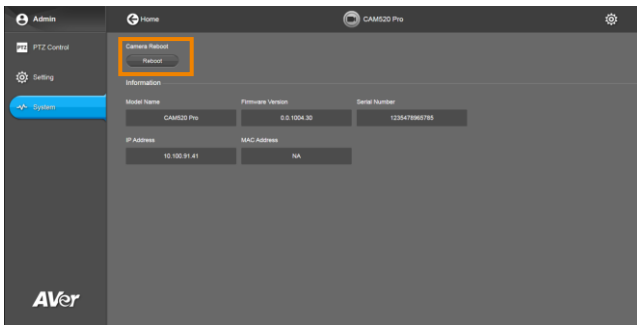
## Setting Selection

In setting page, the setting selections will depend on the camera has supported.



## Camera Reboot

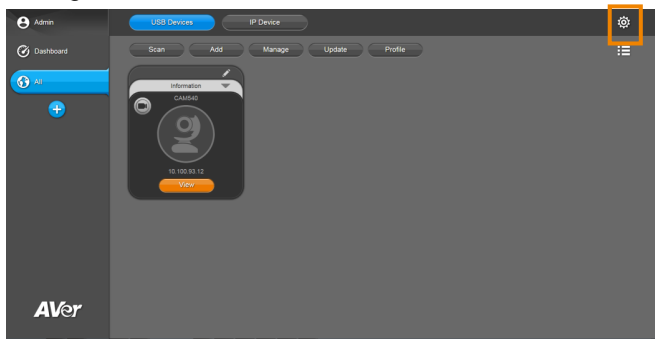
In System page, camera information is displayed. Click **Reboot** button to reboot the camera.



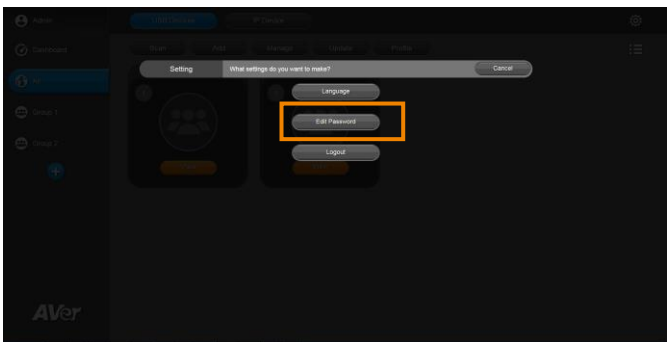
# Edit Password

Change the login password of EZManager 2.

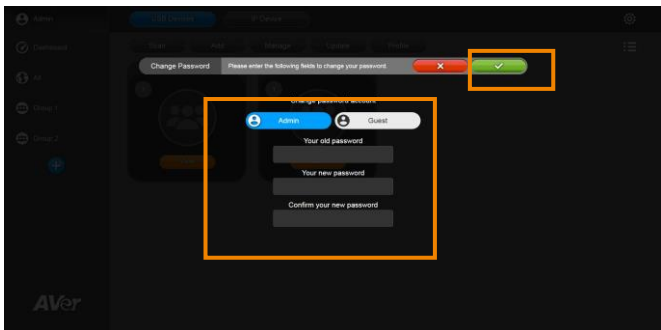
- 1. Click the setting button.



- 2. Click **Edit Password**.

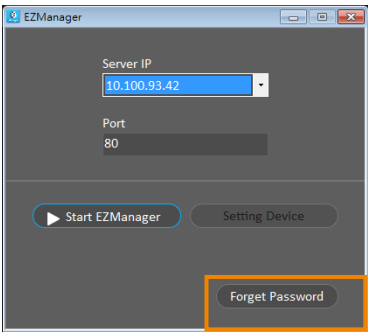


- 3. Select to change password of Admin or Guest. Enter the current password, new password, and re-enter new password in corresponding fields. Click the check button to change the password.

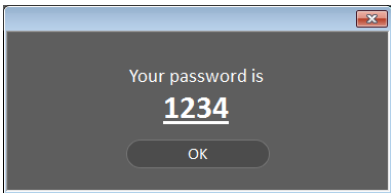


# Forget Password

If user forgets the login password of EZManager 2, click Forget Password button on the login dialog.



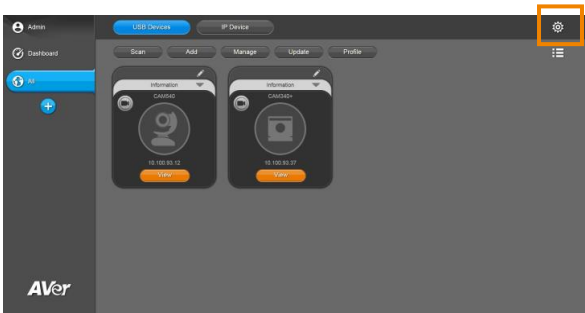
A password dialog is displayed and current password is shown.



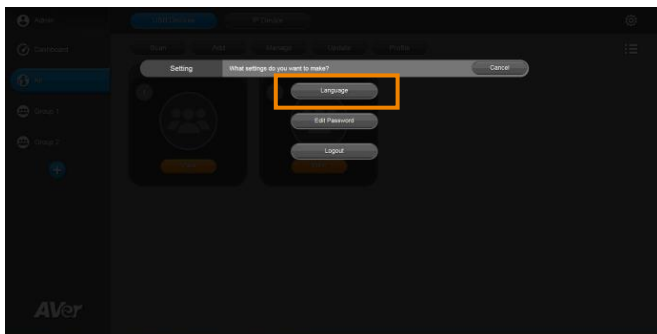
# Select System Language

Select the EZManager 2 system language. It will display the corresponding language based on user's OS language setting.

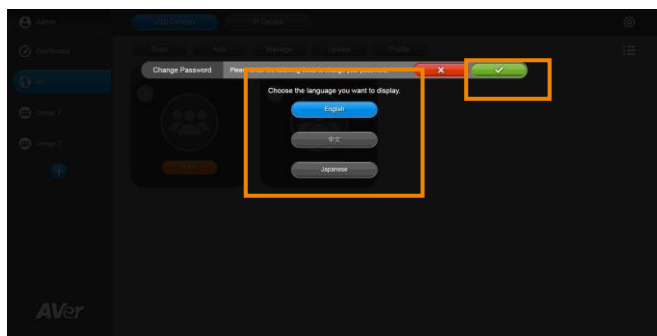
- 1. Click the setting button.



2. Click **Language**.



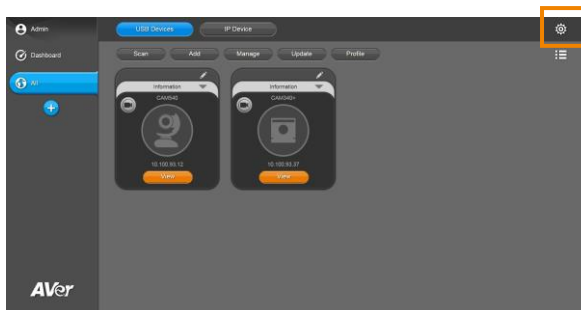
3. Select the language and click the check button.



## Usage Data

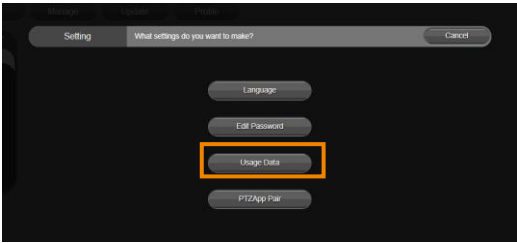
Automatically send diagnostic and usage data to help for improving EZManager,  
The collected data is anonymous and cannot identify users.

1. Click the setting button.

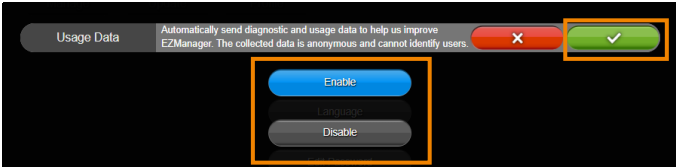




2. Click **Usage Data**.



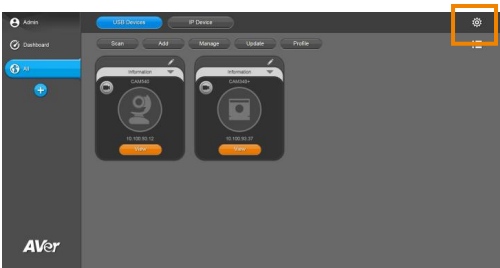
3. Select the Enable / Disable and click the check button.



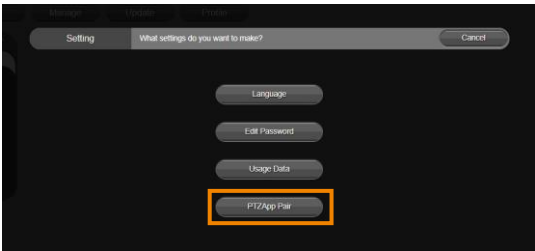
## PTZApp Pair

Users can let EZManager 2 manage remote PTZApp 2. Provide 4-Code ID and the IP address of EZManager for PTZApp2 running EZManager Pair.

1. Click the setting button.



2. Click **PTZApp Pair**



3. Generating the 4-code ID and EZManager WAN IP / LAN IP, and providing the info for PTZApp 2 running EZManager Pair.

The screenshot shows the 'PTZApp Pair' interface. At the top, a status bar indicates '4-code ID generation is complete. Please enter it in PTZApp "EZManager Pair" within the valid time.' and a 'Done' button. Below this, a message states: 'The valid time of the 4-Code ID: 2-11-2021 17:4 ~ 4-11-2021 17:4 after which a new 4-Code ID will be automatically generated.' The main area contains two input sections, both highlighted with orange boxes. The first section is 'EZManager 4-Code ID' with a numeric keypad showing the digits 7, 2, 3, and 0. The second section is 'EZManager WAN IP' and 'EZManager LAN IP'. The WAN IP section has four empty input boxes. The LAN IP section has four input boxes containing the values 10, 100, 200, and 39. A note between the sections says: 'You can select WAN or LAN for pairing according to your network environment.'

**[Note]**

- According to the network environment, provide the WAN/LAN IP to PTZApp 2.
- EZManager WAN IP will get your WAN IP through [whatismyipaddress.com](http://whatismyipaddress.com)
- PTZApp 2 must enter info and submit the application within the validity period.
- When EZManager 2 is paired with PTZApp 2, EZManager must remain online.

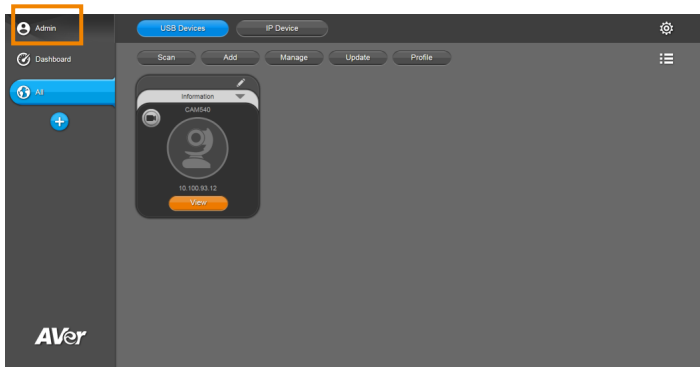
4. After PTZApp 2 submits the request to pair with EZManager 2, EZManger will display "Requesting Devices".

The screenshot shows the 'Admin' interface of EZManager. On the left is a sidebar with navigation options: 'Admin', 'Dashboard', 'All', and 'Requesting Devices' (which is highlighted with a blue box and a checkmark). Below the sidebar is a blue '+' button. The main area has two tabs: 'USB Devices' and 'IP Devices'. The 'Requesting Devices' section is active, displaying a message: 'Please select the device you want to add.' Below this is a card for a device named 'CAM540' with a camera icon and the IP address '10.100.200.39'. An 'Add' button is at the bottom of the card.

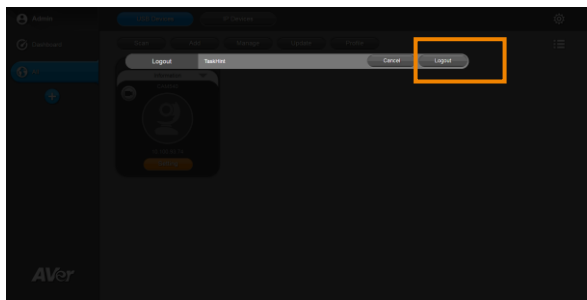
# Logout the EZManager 2

Exit from EZManager 2 system.

- 1. Click **Admin** button.



- 2. Click **Logout**.



# Stop EZManager 2

Click Stop EZManager 2 to disable the EZManager 2.

